

Service Guide Specification

담 당	관 리 자
PARK H.J 04.08.7	KIM O.K 04.08.7

1. Model Description

MODEL	L1730PSUPM L1730PSNPM	BRAND	LG	Part No.	3828TSL085C
SUFFIX	KLEUQW	Product Name	FLATRON L1730P		

2. Printing Specification

1. Trim Size (Format) : **215mm x 280 mm**

2. Printing Colors
 - Cover : **LG COLORS**
 - Inside : **Black**

3. Stock (Paper)
 - Cover : **Snow White 150 g/m²**
 - Inside : **Snow White 100 g/m²**

4. Printing Method :
5. Bindery : **Saddle stitch**
6. Language : **English**
7. Number of pages : **32 (Including blank 3page)**

3. Special Instructions

- (1) Origin Notification**
- | | |
|--------------------------------|-----------------------------|
| * LGEDI : Printed in Indonesia | * LGEWA : Printed in U.K. |
| * LGESP : Printed in Brazil | * LGEMX : Printed in Mexico |
| * LGENT : Printed in China | * LGEIL : Printed in India |

4. Changes

△8					
△7					
△6					
△5					
△4					
△3					
△2					
△1					

REV. NO.	MM/DD/YY	SIGNATURE	CHANGE NO.	CHANGE CONTENTS
----------	----------	-----------	------------	-----------------

Pagination sheet

P/NO.3828TSL085C
Total pages : 32pages

Cover	Front cover	English	English	English	English
	Blank	2	3	4
	English	English	English	English	Rear Cover Inside
	25	26	27	28	Blank
					Rear Cover



Website:<http://biz.LGservice.com>
E-mail:<http://www.LGService.com/techsup.html>

COLOR MONITOR

SERVICE MANUAL

CHASSIS NO. : CL-64

MODEL: FLATRON L1730P (L1730PSUPM-AL**Q)

FLATRON L1730P (L1730PSNPM-AL**Q)

() **Same model for Service

CAUTION

BEFORE SERVICING THE UNIT,
READ THE **SAFETY PRECAUTIONS** IN THIS MANUAL.



CONTENTS

SPECIFICATIONS	2	DESCRIPTION OF BLOCK DIAGRAM	13
PRECAUTIONS	4	ADJUSTMENT	15
SERVICE PRECAUTIONS	5	TROUBLESHOOTING GUIDE	17
TIMING CHART	8	EXPLODED VIEW.....	21
DISASSEMBLY	9	REPLACEMENT PARTS LIST	23
WIRING DIAGRAM	11	SCHEMATIC DIAGRAM.....	26
BLOCK DIAGRAM	12		

SPECIFICATIONS

1. LCD CHARACTERISTICS

- Type : TFT Color LCD
- Size : 17 inch
- Pixel Pitch : 0.264 (H) x 0.264 (V)
- Color Depth : 16.2M colors
- Electrical Interface : LVDS
- Surface Treatment : Hard-coating(3H), Anti-Glare
- Operating Mode : Normally White
- Backlight Unit : 4-CCFL

2. OPTICAL CHARACTERISTICS

- 2-1. Viewing Angle by Contrast Ratio ≥ 10
 - Left : 60° min., 70°(Typ) Right : 60°min., 70°(Typ)
 - Top : 45° min., 60°(Typ) Bottom : 50°min., 60°(Typ)
- 2-2. Luminance : 250(min), 300(Typ)
- 2-3. Contrast Ratio : 300(min), 450(Typ)

3. SIGNAL (Refer to the Timing Chart)

- 3-1. Sync Signal
 - Type : Separate Sync,
SOG (Sync On Green)
Digital
- 3-2. Video Input Signal
 - 1) Type : R, G, B Analog
 - 2) Voltage Level : 0~0.7 V
 - 3) Input Impedance : 75 Ω
- 3-3. Operating Frequency
 - Horizontal : 30 ~ 83kHz (Digital: ~71kHz)
 - Vertical : 56 ~ 75Hz

4. POWER SUPPLY

- 4-1. Power : AC 100~240V, 50/60Hz , 1.0A
- 4-2. Power Consumption

MODE	H/V SYNC	VIDEO	POWER CONSUMPTION	LED COLOR
POWER ON (NORMAL)	ON/ON	ACTIVE	less than 43 W	GREEN
STAND-BY	OFF/ON	OFF	less than 2 W	AMBER
SUSPEND	ON/OFF	OFF	less than 2 W	AMBER
DPMS OFF	OFF/OFF	OFF	less than 2 W	AMBER
POWER S/W OFF	-	-	less than 1 W	OFF

5. ENVIRONMENT

- 5-1. Operating Temperature: 10°C ~ 35°C (50°F~95°F)
- 5-2. Operating Humidity : 10% ~ 80%

6. DIMENSIONS (with TILT/SWIVEL)

- Width : 398 mm (15.67")
- Depth : 140mm (5.51")
- Height : 400.5 mm (15.76")

7. WEIGHT (with TILT/SWIVEL)

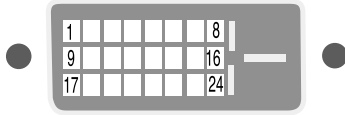
- Net. Weight : 6.1 kg (13.45 lbs)
- Gross Weight : 8.1 kg (17.86 lbs)

8. USB(Optional)

- Downstream power supply : 100mA for each(MAX)
- Communication speed : 12Mbps(full), 1.5Mbps(low)
- USB Port : 1Upstream port
2Downstream ports

Signal Connector Pin Assignment

• DVI-I Connector (Digital/Analog)



Pin	Signal (DVI-D)
1	T. M. D. S. Data2-
2	T. M. D. S. Data2+
3	T. M. D. S. Data2/4 Shield
4	T. M. D. S. Data4-
5	T. M. D. S. Data4+
6	DDC Clock
7	DDC Data
8	Analog Vertical Sync.
9	T. M. D. S. Data1-
10	T. M. D. S. Data1+
11	T. M. D. S. Data1/3 Shield
12	T. M. D. S. Data3-
13	T. M. D. S. Data3+
14	+5V Power
15	Ground (return for +5V, H. Sync. and V. Sync.)

Pin	Signal (DVI-D)
16	Hot Plug Detect
17	T. M. D. S. Data0-
18	T. M. D. S. Data0+
19	T. M. D. S. Data0/5 Shield
20	T. M. D. S. Data5-
21	T. M. D. S. Data5+
22	T. M. D. S. Clock Shield
23	T. M. D. S. Clock+
24	T. M. D. S. Clock-

T. M. D. S. (Transition Minimized Differential Signaling)

PRECAUTION

WARNING FOR THE SAFETY-RELATED COMPONENT.

- There are some special components used in LCD monitor that are important for safety. **These parts are marked \triangle on the schematic diagram and the replacement parts list.** It is essential that these critical parts should be replaced with the manufacturer's specified parts to prevent electric shock, fire or other hazard.
- Do not modify original design without obtaining written permission from manufacturer or you will void the original parts and labor guarantee.

TAKE CARE DURING HANDLING THE LCD MODULE WITH BACKLIGHT UNIT.

- Must mount the module using mounting holes arranged in four corners.
- Do not press on the panel, edge of the frame strongly or electric shock as this will result in damage to the screen.
- Do not scratch or press on the panel with any sharp objects, such as pencil or pen as this may result in damage to the panel.
- Protect the module from the ESD as it may damage the electronic circuit (C-MOS).
- Make certain that treatment person's body are grounded through wrist band.
- Do not leave the module in high temperature and in areas of high humidity for a long time.
- The module not be exposed to the direct sunlight.
- Avoid contact with water as it may a short circuit within the module.
- If the surface of panel become dirty, please wipe it off with a softmaterial. (Cleaning with a dirty or rough cloth may damage the panel.)

\triangle CAUTION

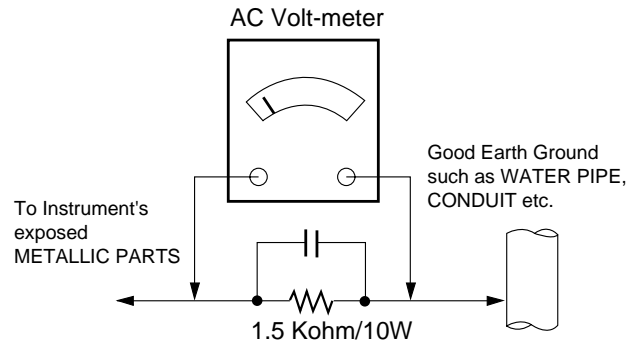
Please use only a plastic screwdriver to protect yourself from shock hazard during service operation.

\triangle WARNING

BE CAREFUL ELECTRIC SHOCK !

- If you want to replace with the new backlight (CCFL) or inverter circuit, must disconnect the AC adapter because high voltage appears at inverter circuit about 650Vrms.
- Handle with care wires or connectors of the inverter circuit. If the wires are pressed cause short and may burn or take fire.

Leakage Current Hot Check Circuit



SERVICING PRECAUTIONS

CAUTION: Before servicing receivers covered by this service manual and its supplements and addenda, read and follow the **SAFETY PRECAUTIONS** on page 3 of this publication.

NOTE: If unforeseen circumstances create conflict between the following servicing precautions and any of the safety precautions on page 3 of this publication, always follow the safety precautions. Remember: Safety First.

General Servicing Precautions

1. Always unplug the receiver AC power cord from the AC power source before;
 - a. Removing or reinstalling any component, circuit board module or any other receiver assembly.
 - b. Disconnecting or reconnecting any receiver electrical plug or other electrical connection.
 - c. Connecting a test substitute in parallel with an electrolytic capacitor in the receiver.

CAUTION: A wrong part substitution or incorrect polarity installation of electrolytic capacitors may result in an explosion hazard.

- d. Discharging the picture tube anode.
2. Test high voltage only by measuring it with an appropriate high voltage meter or other voltage measuring device (DVM, FETVOM, etc) equipped with a suitable high voltage probe.
Do not test high voltage by "drawing an arc".
 3. Discharge the picture tube anode only by (a) first connecting one end of an insulated clip lead to the degaussing or kine aquadag grounding system shield at the point where the picture tube socket ground lead is connected, and then (b) touch the other end of the insulated clip lead to the picture tube anode button, using an insulating handle to avoid personal contact with high voltage.
 4. Do not spray chemicals on or near this receiver or any of its assemblies.
 5. Unless specified otherwise in this service manual, clean electrical contacts only by applying the following mixture to the contacts with a pipe cleaner, cotton-tipped stick or comparable non-abrasive applicator; 10% (by volume) Acetone and 90% (by volume) isopropyl alcohol (90%-99% strength)

CAUTION: This is a flammable mixture.

Unless specified otherwise in this service manual, lubrication of contacts is not required.

6. Do not defeat any plug/socket B+ voltage interlocks with which receivers covered by this service manual might be equipped.
7. Do not apply AC power to this instrument and/or any of its electrical assemblies unless all solid-state device heat sinks are correctly installed.
8. Always connect the test receiver ground lead to the receiver chassis ground before connecting the test receiver positive lead.

Always remove the test receiver ground lead last.

9. Use with this receiver only the test fixtures specified in this service manual.

CAUTION: Do not connect the test fixture ground strap to any heat sink in this receiver.

Electrostatically Sensitive (ES) Devices

Some semiconductor (solid-state) devices can be damaged easily by static electricity. Such components commonly are called *Electrostatically Sensitive (ES) Devices*. Examples of typical ES devices are integrated circuits and some field-effect transistors and semiconductor "chip" components. The following techniques should be used to help reduce the incidence of component damage caused by static by static electricity.

1. Immediately before handling any semiconductor component or semiconductor-equipped assembly, drain off any electrostatic charge on your body by touching a known earth ground. Alternatively, obtain and wear a commercially available discharging wrist strap device, which should be removed to prevent potential shock reasons prior to applying power to the unit under test.
2. After removing an electrical assembly equipped with ES devices, place the assembly on a conductive surface such as aluminum foil, to prevent electrostatic charge buildup or exposure of the assembly.
3. Use only a grounded-tip soldering iron to solder or unsolder ES devices.
4. Use only an anti-static type solder removal device. Some solder removal devices not classified as "anti-static" can generate electrical charges sufficient to damage ES devices.
5. Do not use freon-propelled chemicals. These can generate electrical charges sufficient to damage ES devices.
6. Do not remove a replacement ES device from its protective package until immediately before you are ready to install it. (Most replacement ES devices are packaged with leads electrically shorted together by conductive foam, aluminum foil or comparable conductive material).
7. Immediately before removing the protective material from the leads of a replacement ES device, touch the protective material to the chassis or circuit assembly into which the device will be installed.

CAUTION: Be sure no power is applied to the chassis or circuit, and observe all other safety precautions.

8. Minimize bodily motions when handling unpackaged replacement ES devices. (Otherwise harmless motion such as the brushing together of your clothes fabric or the lifting of your foot from a carpeted floor can generate static electricity sufficient to damage an ES device.)

General Soldering Guidelines

1. Use a grounded-tip, low-wattage soldering iron and appropriate tip size and shape that will maintain tip temperature within the range of 500 °F to 600 °F.
2. Use an appropriate gauge of RMA resin-core solder composed of 60 parts tin/40 parts lead.
3. Keep the soldering iron tip clean and well tinned.
4. Thoroughly clean the surfaces to be soldered. Use a small wire-bristle (0.5 inch, or 1.25cm) brush with a metal handle.

Do not use freon-propelled spray-on cleaners.

5. Use the following unsoldering technique
 - a. Allow the soldering iron tip to reach normal temperature.
(500 °F to 600 °F)
 - b. Heat the component lead until the solder melts.
 - c. Quickly draw the melted solder with an anti-static, suction-type solder removal device or with solder braid.
6. Use the following soldering technique.
 - a. Allow the soldering iron tip to reach a normal temperature (500 °F to 600 °F)
 - b. First, hold the soldering iron tip and solder the strand against the component lead until the solder melts.

- c. Quickly move the soldering iron tip to the junction of the component lead and the printed circuit foil, and hold it there only until the solder flows onto and around both the component lead and the foil.

CAUTION: Work quickly to avoid overheating the circuit board printed foil.

- d. Closely inspect the solder area and remove any excess or splashed solder with a small wire-bristle brush.

IC Remove/Replacement

Some chassis circuit boards have slotted holes (oblong) through which the IC leads are inserted and then bent flat against the circuit foil. When holes are the slotted type, the following technique should be used to remove and replace the IC. When working with boards using the familiar round hole, use the standard technique as outlined in paragraphs 5 and 6 above.

Removal

1. Desolder and straighten each IC lead in one operation by gently prying up on the lead with the soldering iron tip as the solder melts.
2. Draw away the melted solder with an anti-static suction-type solder removal device (or with solder braid) before removing the IC.

Replacement

1. Carefully insert the replacement IC in the circuit board.
2. Carefully bend each IC lead against the circuit foil pad and solder it.
3. Clean the soldered areas with a small wire-bristle brush. (It is not necessary to reapply acrylic coating to the areas).

"Small-Signal" Discrete Transistor

Removal/Replacement

1. Remove the defective transistor by clipping its leads as close as possible to the component body.
2. Bend into a "U" shape the end of each of three leads remaining on the circuit board.
3. Bend into a "U" shape the replacement transistor leads.
4. Connect the replacement transistor leads to the corresponding leads extending from the circuit board and crimp the "U" with long nose pliers to insure metal to metal contact then solder each connection.

Power Output, Transistor Device

Removal/Replacement

1. Heat and remove all solder from around the transistor leads.
2. Remove the heat sink mounting screw (if so equipped).
3. Carefully remove the transistor from the heat sink of the circuit board.
4. Insert new transistor in the circuit board.
5. Solder each transistor lead, and clip off excess lead.
6. Replace heat sink.

Diode Removal/Replacement

1. Remove defective diode by clipping its leads as close as possible to diode body.
2. Bend the two remaining leads perpendicular to the circuit board.
3. Observing diode polarity, wrap each lead of the new diode around the corresponding lead on the circuit board.
4. Securely crimp each connection and solder it.
5. Inspect (on the circuit board copper side) the solder joints of the two "original" leads. If they are not shiny, reheat them and if necessary, apply additional solder.

Fuse and Conventional Resistor

Removal/Replacement

1. Clip each fuse or resistor lead at top of the circuit board hollow stake.
2. Securely crimp the leads of replacement component around notch at stake top.
3. Solder the connections.

CAUTION: Maintain original spacing between the replaced component and adjacent components and the circuit board to prevent excessive component temperatures.

Circuit Board Foil Repair

Excessive heat applied to the copper foil of any printed circuit board will weaken the adhesive that bonds the foil to the circuit board causing the foil to separate from or "lift-off" the board. The following guidelines and procedures should be followed whenever this condition is encountered.

At IC Connections

To repair a defective copper pattern at IC connections use the following procedure to install a jumper wire on the copper pattern side of the circuit board. (Use this technique only on IC connections).

1. Carefully remove the damaged copper pattern with a sharp knife. (Remove only as much copper as absolutely necessary).
2. Carefully scratch away the solder resist and acrylic coating (if used) from the end of the remaining copper pattern.
3. Bend a small "U" in one end of a small gauge jumper wire and carefully crimp it around the IC pin. Solder the IC connection.
4. Route the jumper wire along the path of the out-away copper pattern and let it overlap the previously scraped end of the good copper pattern. Solder the overlapped area and clip off any excess jumper wire.

At Other Connections

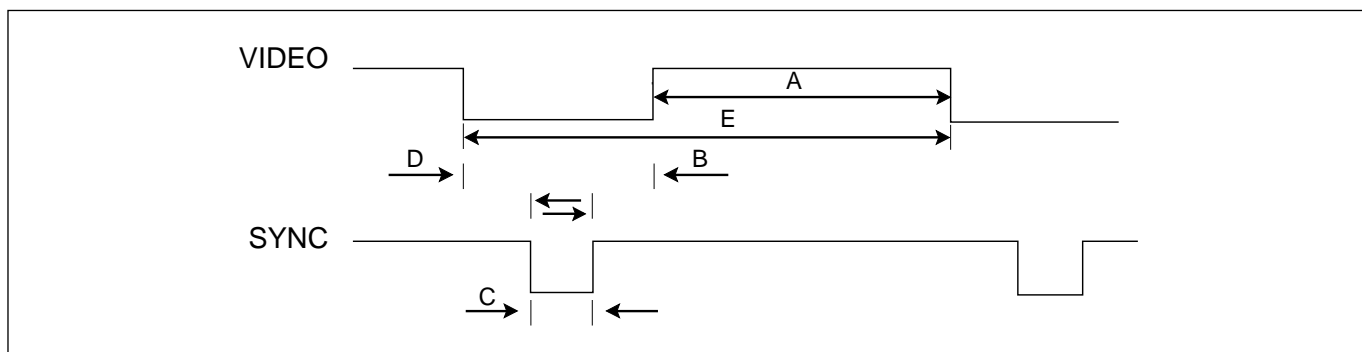
Use the following technique to repair the defective copper pattern at connections other than IC Pins. This technique involves the installation of a jumper wire on the component side of the circuit board.

1. Remove the defective copper pattern with a sharp knife.
Remove at least 1/4 inch of copper, to ensure that a hazardous condition will not exist if the jumper wire opens.
2. Trace along the copper pattern from both sides of the pattern break and locate the nearest component that is directly connected to the affected copper pattern.
3. Connect insulated 20-gauge jumper wire from the lead of the nearest component on one side of the pattern break to the lead of the nearest component on the other side.

Carefully crimp and solder the connections.

CAUTION: Be sure the insulated jumper wire is dressed so the it does not touch components or sharp edges.

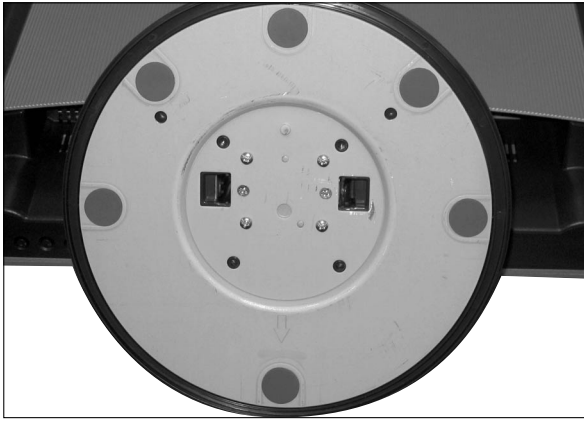
TIMING CHART



MODE	H / V	Sync Polarity	Dot Clock	Frequency	Total Period (E)	Video Active Time (A)	Sync Duration (D)	Front Porch (C)	Blanking Time (B)	Resolution
1	H(Pixels)	+	25.175	31.469	800	640	16	96	48	640 x 350
	V(Lines)	-		70.09	449	350	37	2	60	
2	H(Pixels)	-	28.321	31.468	900	720	18	108	54	720 X 400
	V(Lines)	+		70.08	449	400	12	2	35	
3	H(Pixels)	-	25.175	31.469	800	640	16	96	48	640 x 480
	V(Lines)	-		59.94	525	480	10	2	33	
4	H(Pixels)	-	31.5	37.5	840	640	16	64	120	640 x 480
	V(Lines)	-		75	500	480	1	3	16	
5	H(Pixels)	+	40.0	37.879	1056	800	40	128	88	800 x 600
	V(Lines)	+		60.317	628	600	1	4	23	
6	H(Pixels)	+	49.5	46.875	1056	800	16	80	160	800 x 600
	V(Lines)	+		75.0	625	600	1	3	21	
7	H(Pixels)	+/-	57.283	49.725	1152	832	32	64	224	832 x 624
	V(Lines)	+/-		74.55	667	624	1	3	39	
8	H(Pixels)	-	65.0	48.363	1344	1024	24	136	160	1024 x 768
	V(Lines)	-		60.0	806	768	3	6	29	
9	H(Pixels)	-	78.75	60.123	1312	1024	16	96	176	1024 x 768
	V(Lines)	-		75.029	800	768	1	3	28	
10	H(Pixels)	+/-	100.0	68.681	1456	1152	32	128	144	1152 x 870
	V(Lines)	+/-		75.062	915	870	3	3	39	
11	H(Pixels)	+/-	92.978	61.805	1504	1152	18	134	200	1152 x 900
	V(Lines)	+/-		65.96	937	900	2	4	31	
12	H(Pixels)	+	108.0	63.981	1688	1280	48	112	248	1280 x 1024
	V(Lines)	+		60.02	1066	1024	1	3	38	
13	H(Pixels)	+	135.0	79.976	1688	1280	16	144	248	1280 x 1024
	V(Lines)	+		75.035	1066	1024	1	3	38	

DISASSEMBLY

1



1. Put a soft cushion on the floor and lay the stand on its side so that the base is accessible.

4



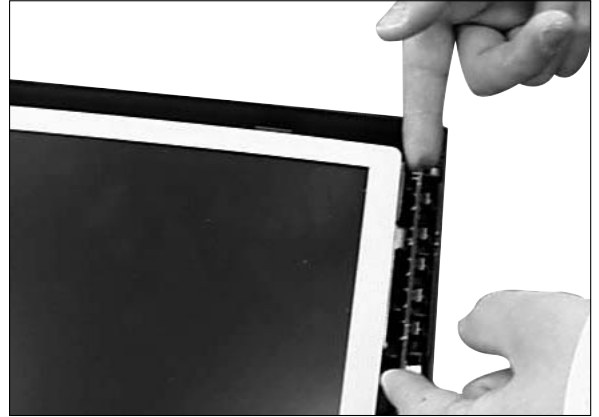
4. Cover the panel with your hand so that it is not scratched. Then, pull up the cabinet corner side.

2



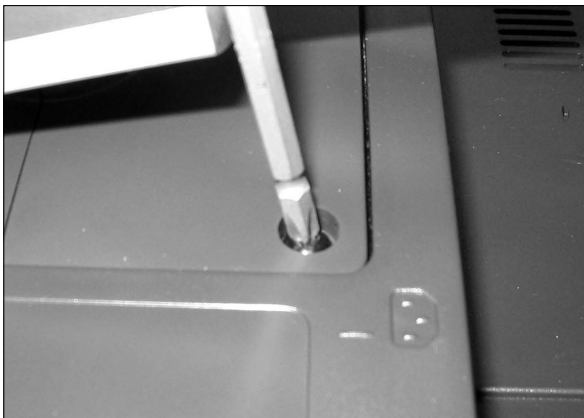
2. Hold the set while folding the latch and take out the stand base.

5



5-1. Disassemble the cabinet.
5-2. Hold the control PCB as shown in the figure and gently pull it out.

3



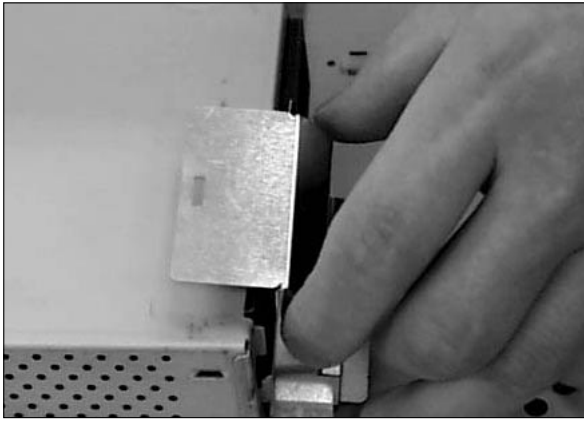
3-1. Push the cover upward and remove it.
3-2. Unscrew the four screws.

6



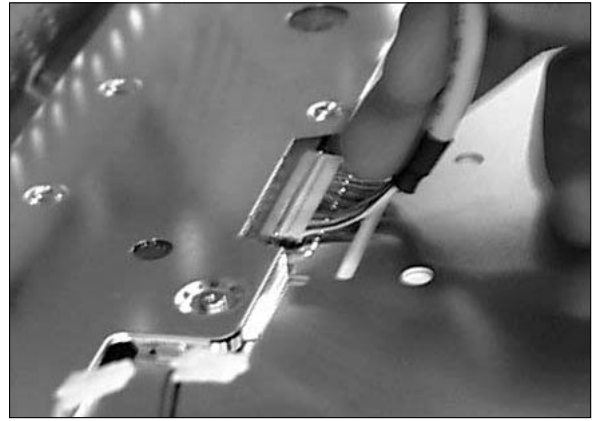
6. Push up the back cover as shown in the figure and pull out the chassis assembly so that the latch is untied.

7



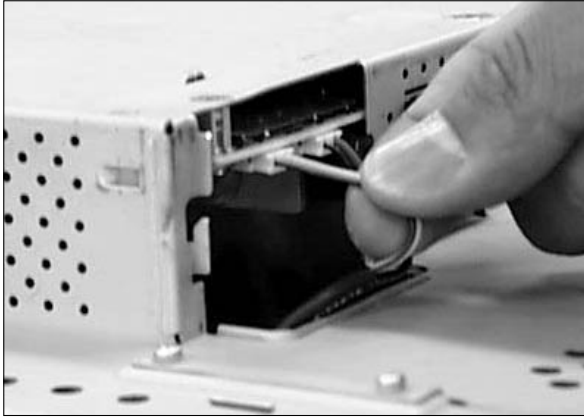
7. Push the shield cap upward and disassemble it.

9



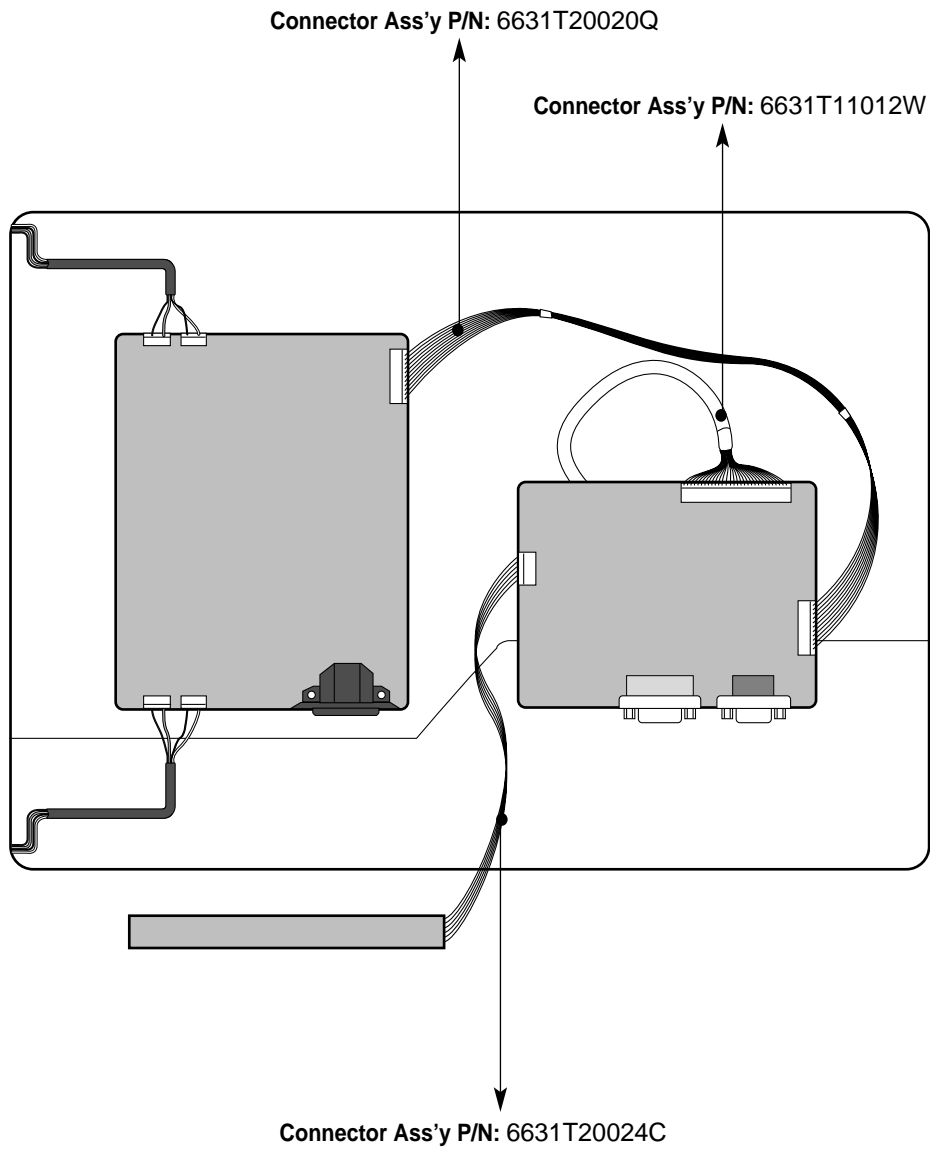
9. Pull out the link cable while pushing up the main frame.

8

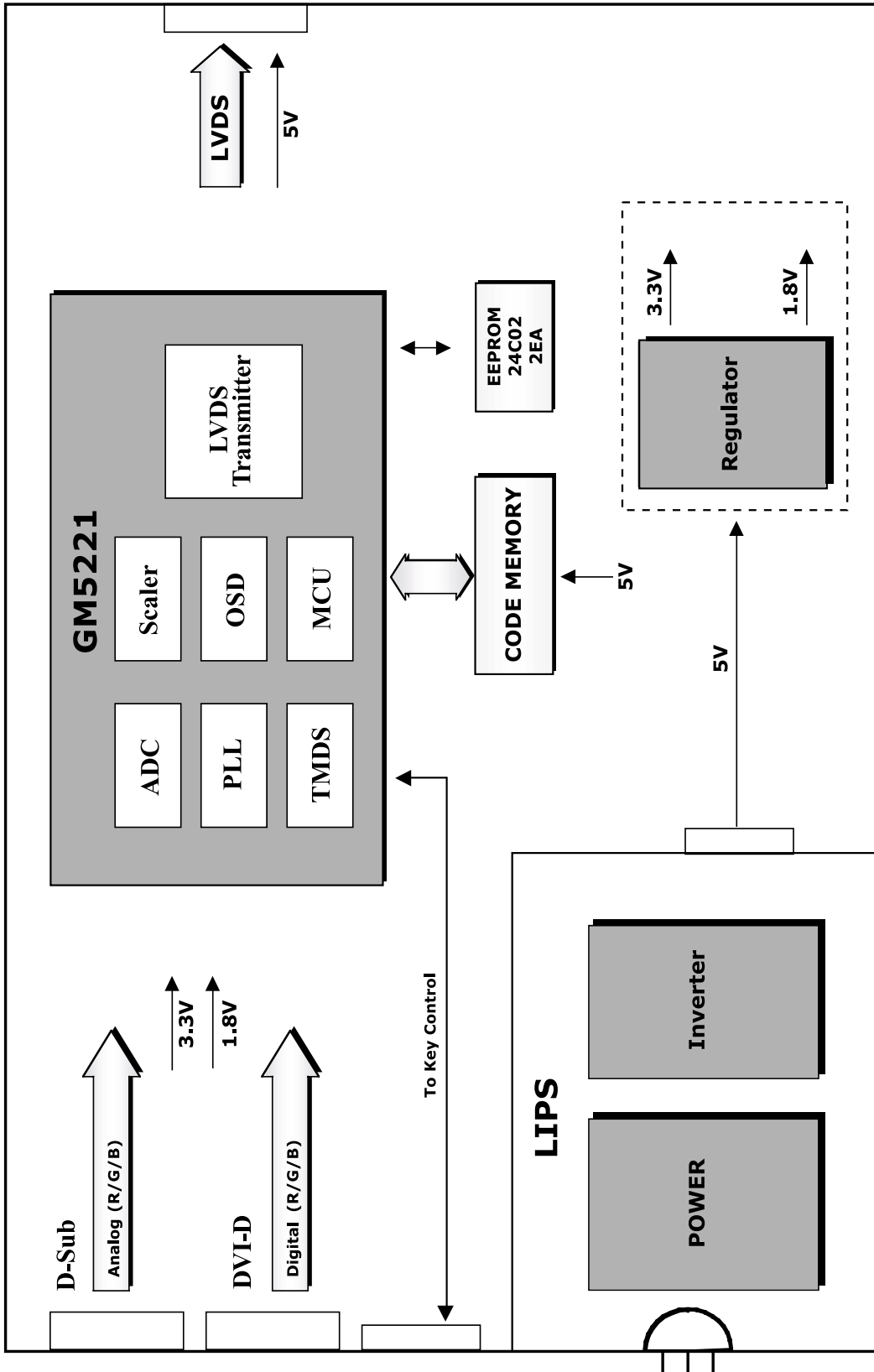


8. Pull out the cable.

WIRING DIAGRAM



BLOCK DIAGRAM



DESCRIPTION OF BLOCK DIAGRAM

1. Video Controller Part.

This part amplifies the level of video signal for the digital conversion and converts from the analog video signal to the digital video signal using a pixel clock.

The pixel clock for each mode is generated by the PLL.

The range of the pixel clock is from 25MHz to 135MHz.

This part consists of the Scaler, ADC convertor and LVDS transmitter.

The Scaler gets the video signal converted analog to digital, interpolates input to 1280 X 1024 resolution signal and outputs 8-bit R, G, B signal to transmitter.

2. Power Part.

This part consists of the one 3.3V, and one 1.8V regulators to convert power which is provided 5V in Power board.

12V is provided for inverter, 12V is provided for LCD panel and 5V for micom.

Also, 5V is converted 3.3V and 1.8V by regulator. Converted power is provided for IC in the main board.

The inverter converts from DC12V to AC 700Vrms and operates back-light lamps of module.

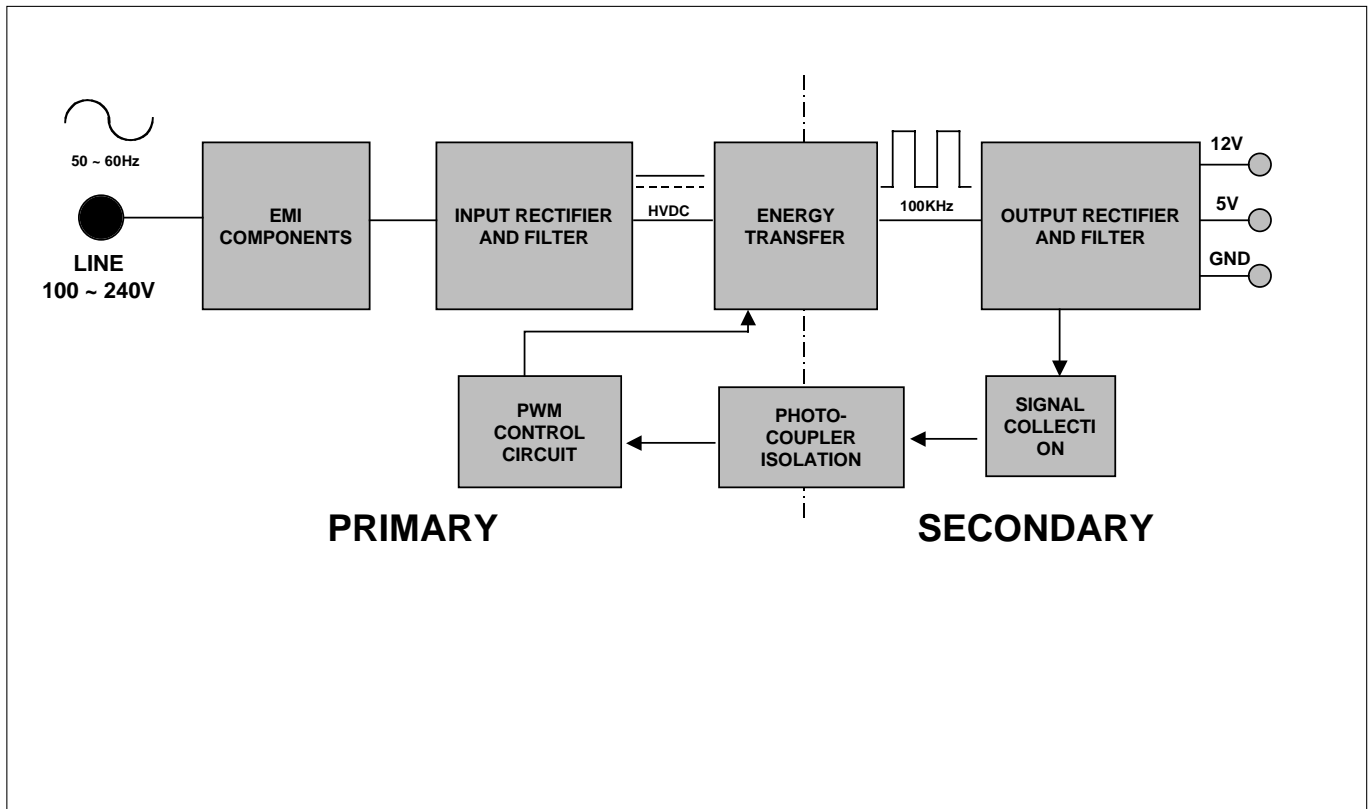
3. MICOM Part.

This part is include video controller part. And this part consists of EEPROM IC which stores control data, Reset IC and the Micom.

The Micom distinguishes polarity and frequency of the H/V sync are supplied from signal cable.

The controlled data of each modes is stored in EEPROM.

LIPS Board Block Diagram



Operation description_LIPS

1. EMI components.

This part contains of EMI components to comply with global marketing EMI standards like FCC,VCCI CISPR, the circuit included a line-filter, across line capacitor and of course the primary protection fuse.

2. Input rectifier and filter.

This part function is for transfer the input AC voltage to a DC voltage through a bridge rectifier and a bulk capacitor.

3. Energy Transfer.

This part function is for transfer the primary energy to secondary through a power transformer.

4. Output rectifier and filter.

This part function is to make a pulse width modulation control and to provide the driver signal to power switch,to adjust the duty cycle during different AC input and output loading condition to achieve the dc output stabilized, and also the over power protection is also monitor by this part.

5. Photo-Coupler isolation.

This part function is to feed back the dc output changing status through a photo transistor to primary controller to achieve the stabilized dc output voltage.

6. Signal collection.

This part function is to collect the any change from the dc output and feed back to the primary through photo transistor

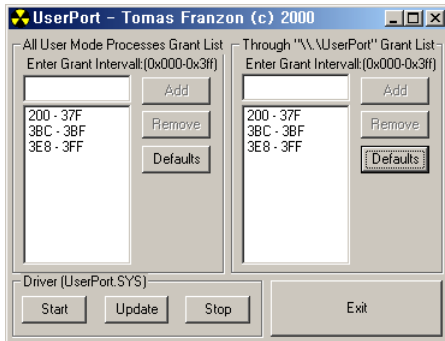
ADJUSTMENT

Windows EDID V1.0 User Manual

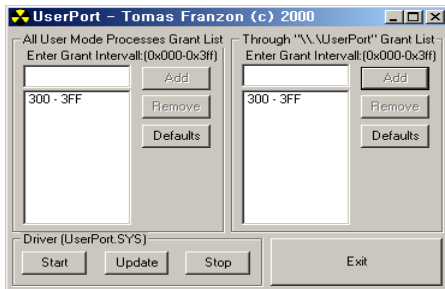
Operating System: MS Windows 98, 2000, XP
 Port Setup: Windows 98 => Don't need setup
 Windows 2000, XP => Need to Port Setup.
 This program is available to LCD Monitor only.

1. Port Setup

- a) Copy "UserPort.sys" file to "c:\WINNT\system32\drivers" folder
- b) Run Userport.exe



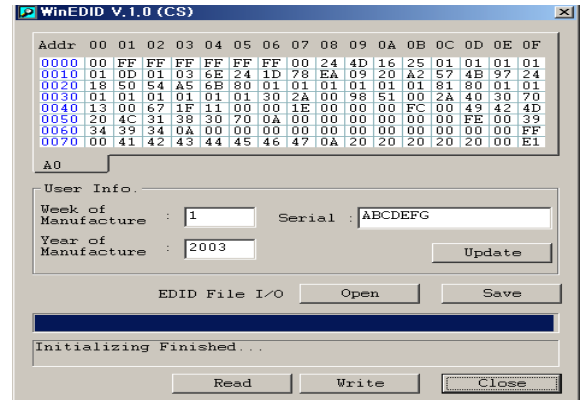
- c) Remove all default number
- d) Add 300-3FF



- e) Click Start button.
- f) Click Exit button.

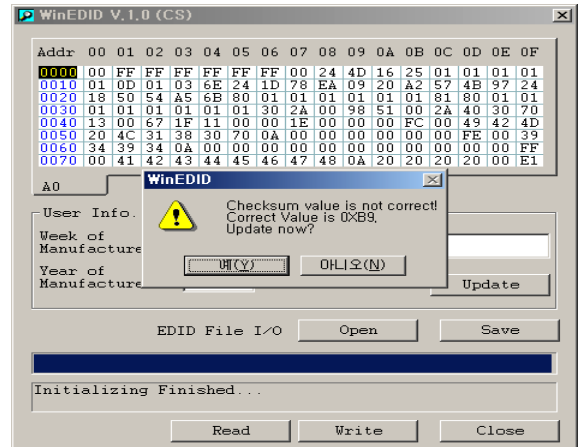
2. EDID Read & Write

1) Run WinEDID.exe



2) Edit Week of Manufacture, Year of Manufacture, Serial Number

- a) Input User Info Data
- b) Click "Update" button
- c) Click "Write" button



SERVICE OSD

- 1) Turn off the power switch at the front side of display.
- 2) Wait for about 5 seconds and press MENU, POWER key with 1 second interval.
- 3) Shows the service OSD menu.
- 4) The service OSD menu contains additional menus that the User OSD menu as described below.
 - a) CLEAR ETI : To initialize using time.
 - b) AUTO COLOR : W/B balance and Automatically sets the gain and offset value.
 - c) AGING : Select Aging mode(on/off).
 - d) PANEL : Select using panel.
 - e) NVRAM INIT : EEPROM initialize(24C08).
 - f) 9300 : Allows you to set the R/G/B.-9300K value manually.
 - g) 6500 : Allows you to set the R/G/B.-6500K value manually.
 - h) OFFSET : Allows you to set the R/G/B.-Offset value manually.(Analog Only)
 - i) GAIN : Allows you to set the R/G/B.-Gain value manually.(Analog Only)

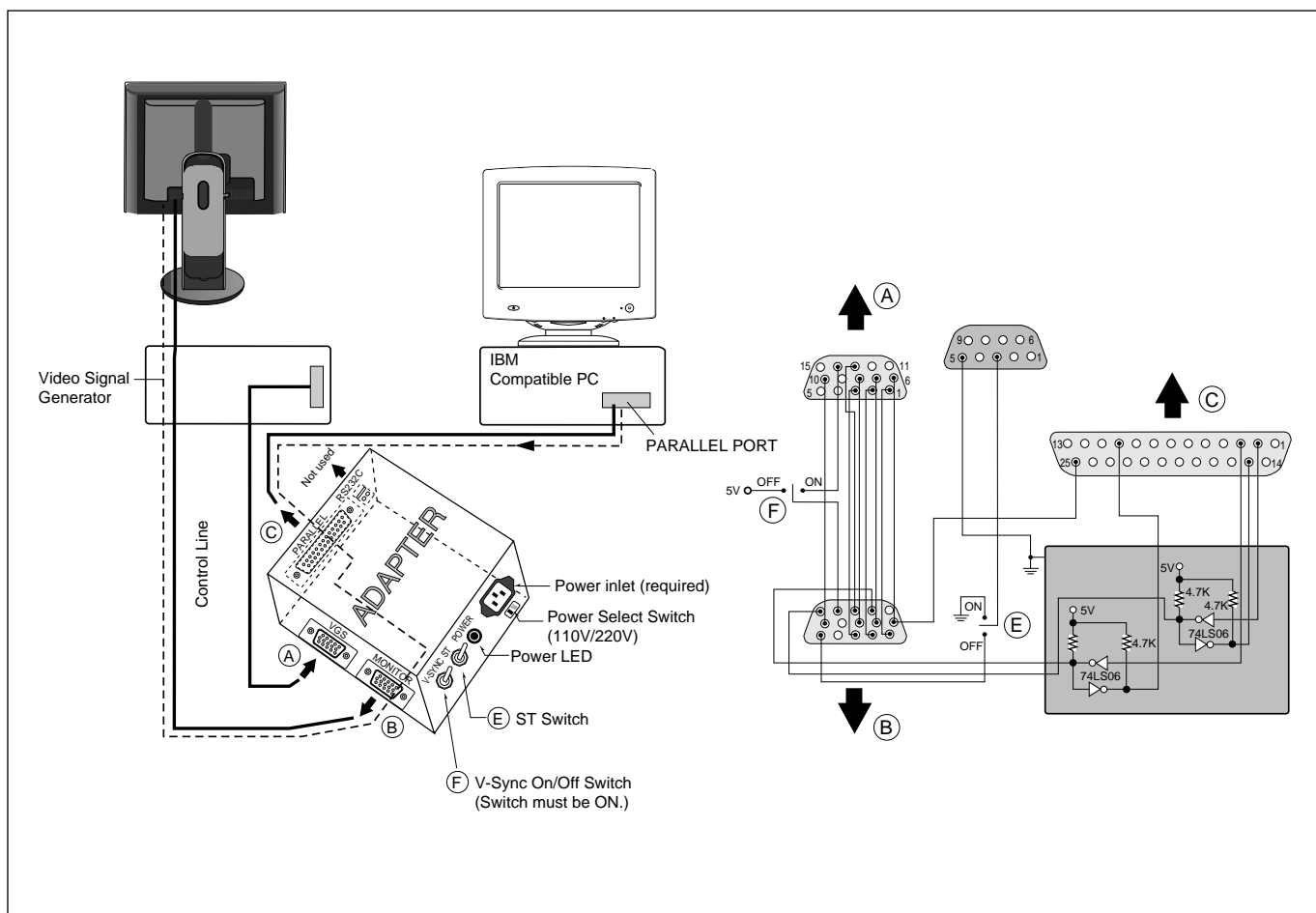
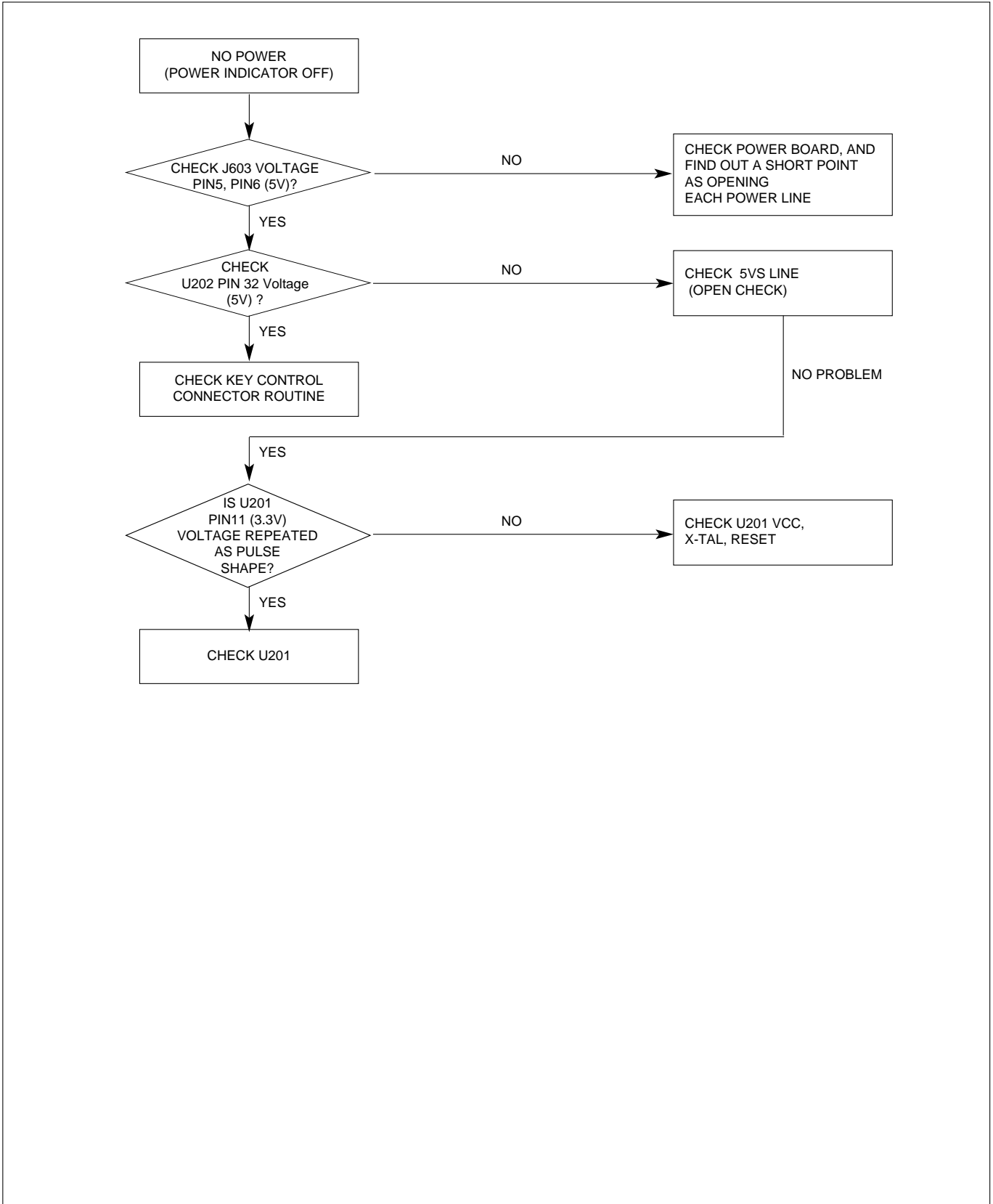


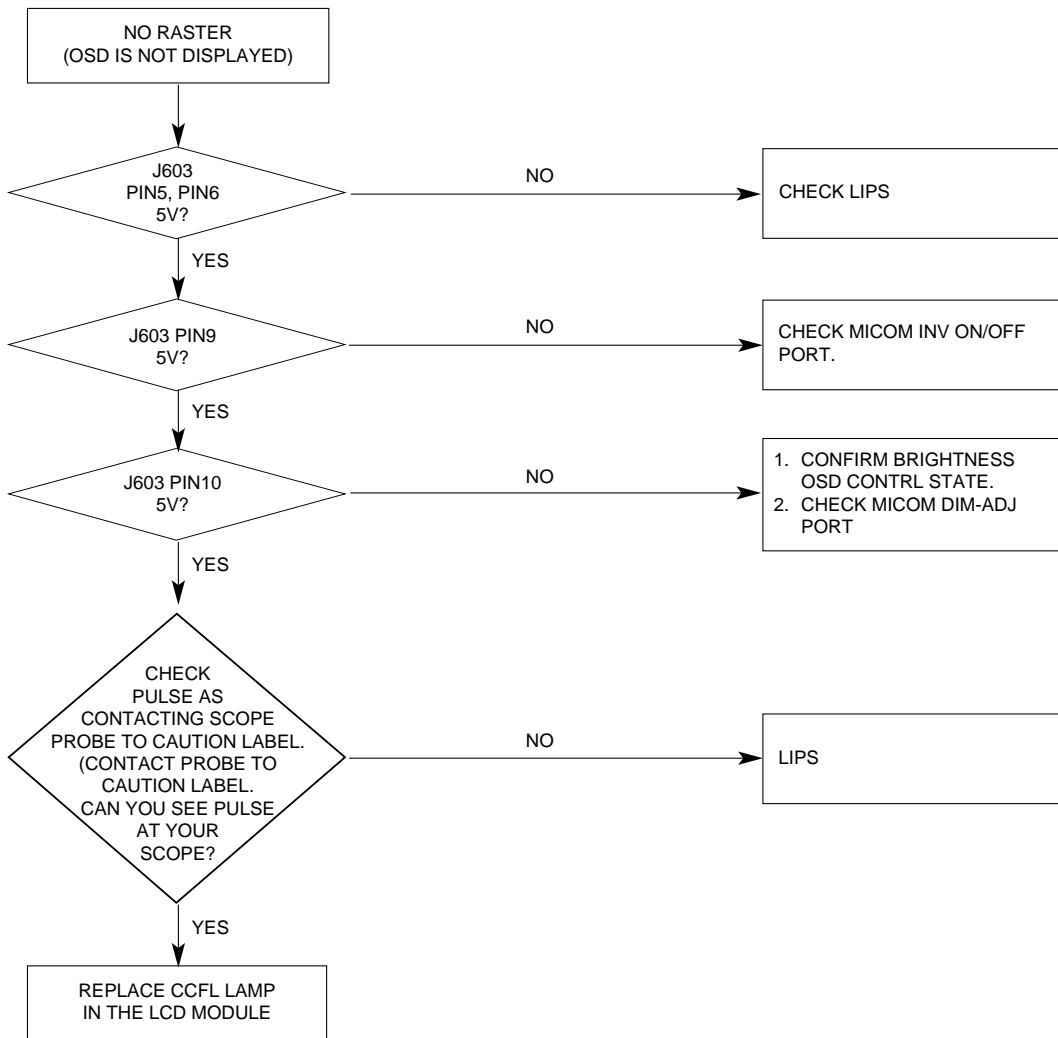
Figure 1. Cable Connection

TROUBLESHOOTING GUIDE

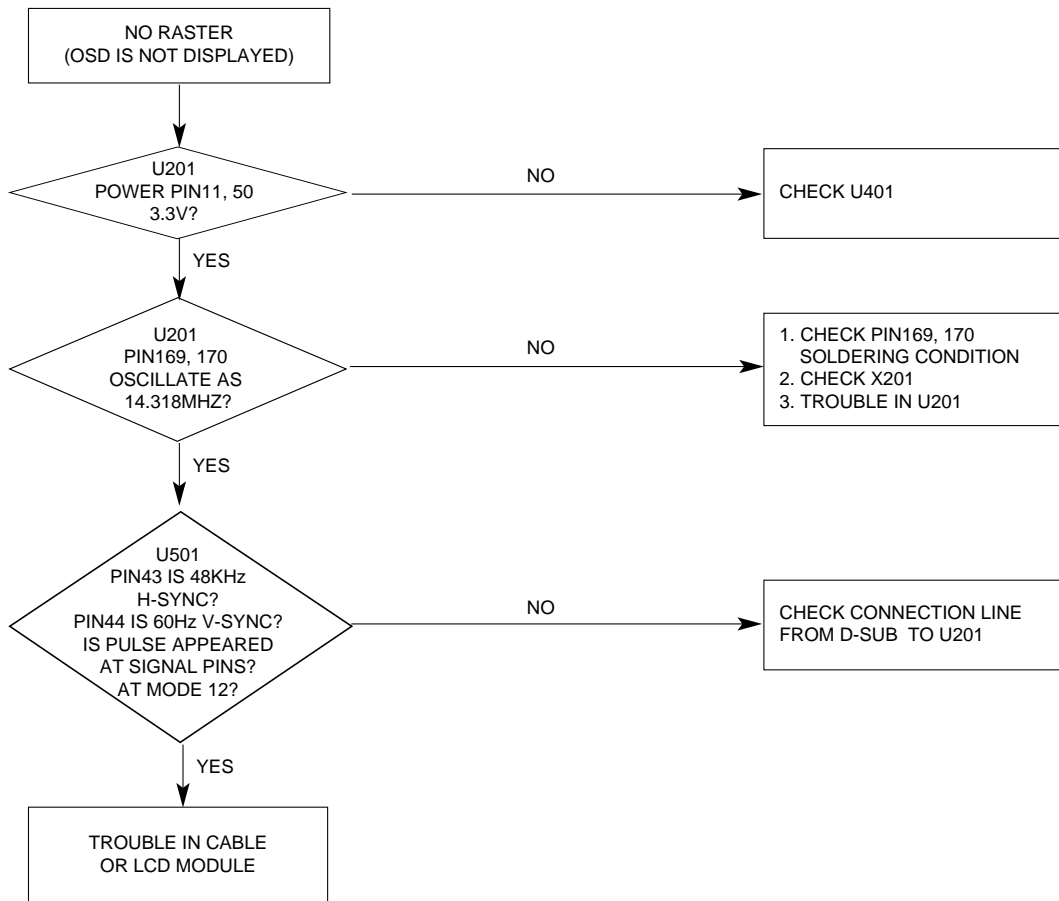
1. NO POWER



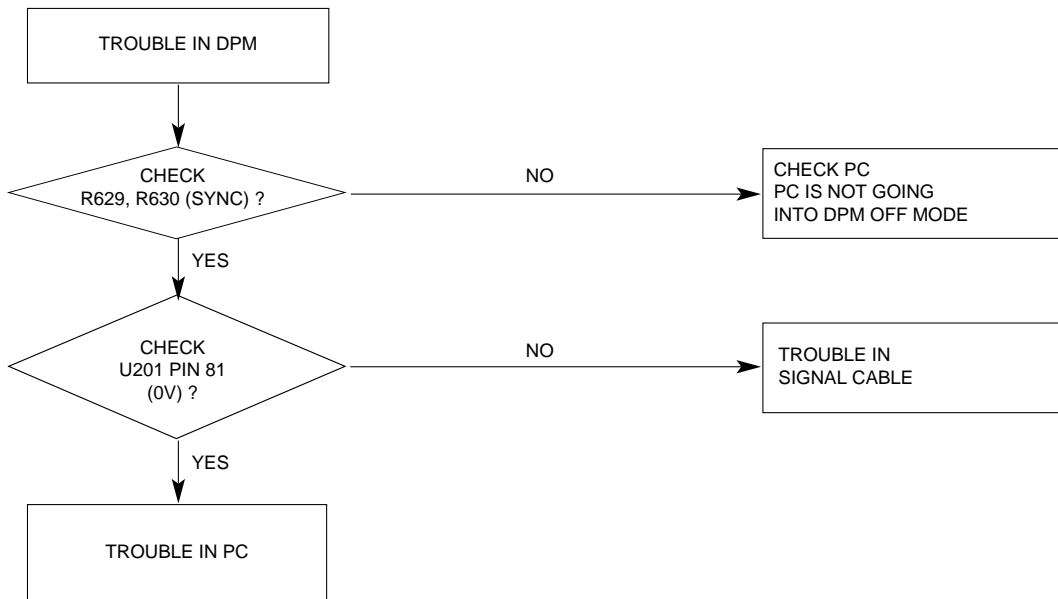
2. NO RASTER (OSD IS NOT DISPLAYED) – LIPS



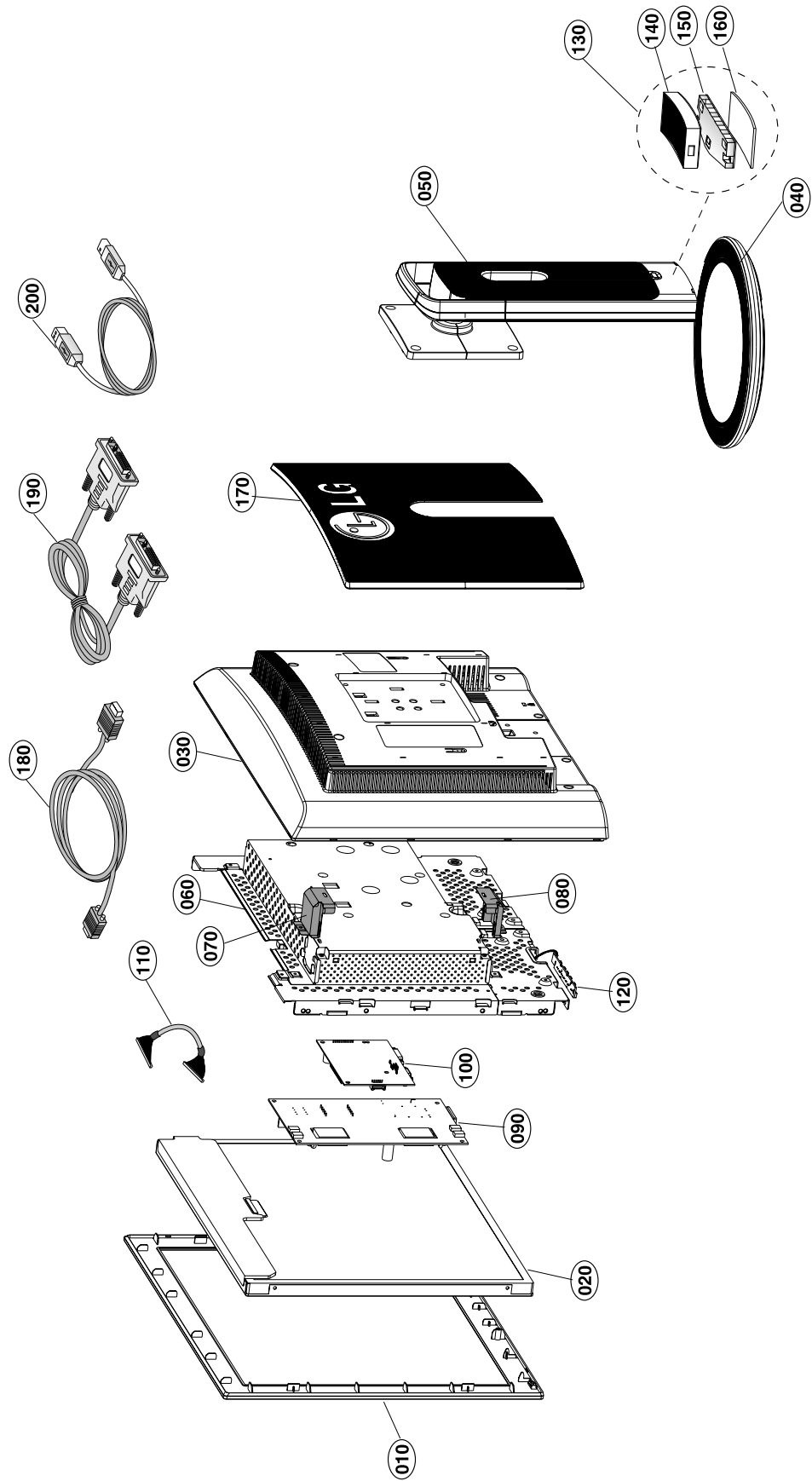
3. NO RASTER (OSD IS NOT DISPLAYED) – GM5221(FE2010)



4. TROUBLE IN DPM



EXPLODED VIEW



EXPLODED VIEW PARTS LIST

Ref. No.	Part No.	Descriptio
010	3091TKL124B	CABINET ASSEMBLY, L1730PSUPM BRAND , TCO03, LIFES GOOD -For Australia(L1730PSUPM)
	3091TKL124G	CABINET ASSEMBLY, L1730PSUPM BRAND , "N"-WA LOCAL -For Europe, U.K
	3091TKL098N	CABINET ASSEMBLY, L1730P(USB) BRAND .. "H"-CKD -For Russia(L1730PSUPM)
	3091TKL098H	CABINET ASSEMBLY, L1730 BRAND 3090TKL090 "P"TYPE_SILVER -For Taiwan(L1730PSNPM)
020	6304FLP107A	LCD(LIQUID CRYSTAL DISPLAY), LM170E01-B5K1 LG PHILPS TFT COLOR (LOX73L),300NITS SXGA LVDS
030	3809TKL068B	BACK COVER ASSEMBLY, L1730 3808TKL073 (DUAL)_D/GRAY -For Australia(L1730PSUPM), Taiwan(L1730PSNPM)
	3809TKL068J	BACK COVER ASSEMBLY, L1730B , "D"-WA LOCAL -For Europe, U.K
	3809TKL068D	BACK COVER ASSEMBLY, L1730 3808TKL073 "B"-CKD -For Russia(L1730PSUPM)
040	3043TKK161C	TILT SWIVEL ASSEMBLY, L1730P .. WITHOUT-SWIVEL -For Australia(L1730PSUPM), Taiwan(L1730PSNPM)
	3043TKK161F	TILT SWIVEL ASSEMBLY, L1930P .. "A"-CKD -For Europe
	3043TKK161E	TILT SWIVEL ASSEMBLY, L1730P .. "C"-CKD -For Russia, U.K(L1730PSUPM)
050	3043TKK148L	TILT SWIVEL ASSEMBLY, L1730 .. WITH PIVOT_SILVER -For Australia(L1730PSUPM), Taiwan(L1730PSNPM)
	3043TKK148X	TILT SWIVEL ASSEMBLY, L1730P .. "L"-CKD -For Europe, Russia, U.K
060	4951TKS137E	METAL ASSEMBLY, FRAME L1730_LPL,HYDIS_DUAL -For Australia(L1730PSUPM), Taiwan(L1730PSNPM)
	4951TKS137M	METAL ASSEMBLY, FRAME "E"-CKD -For Europe, U.K
	4951TKS137Q	METAL ASSEMBLY, FRAME L1730, DUAL, "M"-NT LOCAL -For Russia(L1730PSUPM)
070	4814TKK235A	SHIELD, INVERTER CAP-TOP (L1715) -For Australia(L1730PSUPM), Taiwan(L1730PSNPM)
	4814TKK235C	SHIELD, INVERTER CAP L1715(TOP)-CKD -For Europe, Russia, U.K
080	4814TKK235B	SHIELD, INVERTER CAP-BOTTOM (L1715) -For Australia(L1730PSUPM), Taiwan(L1730PSNPM)
	4814TKK235D	SHIELD, INVERTER CAP L1715(BOT)-CKD -For Europe, Russia, U.K
090	6871TPT271Y	PWB(PCB) ASSEMBLY, POWER, M-CHASSIS 1719 POWER TOTAL LIEN CHANG SOCKET,2PIN,CY101/2 1000PF 450V
	6871TPT271P	PWB(PCB) ASSEMBLY,POWER, M-CHASSIS 1719 POWER TOTAL LIEN CHANG SOCKET,2PIN,CY101/2 1000PF
100	3313TL7042A	MAIN TOTAL ASSEMBLY, L1730PM BRAND CL-64 -For Australia(L1730PSUPM), Taiwan(L1730PSNPM)
	3313TL7042D	MAIN TOTAL ASSEMBLY, L1730PM BRAND CL-64 -For Europe, Russia, U.K(L1730PSUPM)
	3313TL7042F	MAIN TOTAL ASSEMBLY, L1730PSNPM(PLEUQA) BRAND CL-64 -For Europe(L1730PSNPM)
110	6631T11012W	CONNECTOR ASSEMBLY, 30P H-H 200MM UL20276 LG708G
120	6871TST541A	PWB(PCB) ASSEMBLY,SUB, L1730BM CONTROL TOTAL BRAND CONTROL -For Australia(L1730PSUPM), Taiwan(L1730PSNPM)
	6871TST541C	PWB(PCB) ASSEMBLY,SUB, L1530BM CONTROL TOTAL BRAND CL-61 -For Europe, Russia, U.K(L1730PSUPM)
	6871TST541B	PWB(PCB) ASSEMBLY,SUB, L1730BM CONTROL TOTAL BRAND CL-62 -For Europe(L1730PSNPM)
130	6871TUT040A	PWB(PCB) ASSEMBLY,USB, L1930PM SUB TOTAL BRAND USB1.1 -For Australia(L1730PSUPM)
	6871TUT040C	PWB(PCB) ASSEMBLY,USB, L1730PM SUB TOTAL BRAND USB1.1 -For Europe, Russia, U.K(L1730PSUPM)
140	3550TKK504A	COVER, LXX30 TOP USB(350) -Only L1730PSUPM
150	4814TKK266A	SHIELD, USB TOP(LXX30) -Only L1730PSUPM
160	3550TKK505B	COVER, L1730PM/L1930PM BOTTOM USB(350U) -Only L1730PSUPM
170	3550TKK449E	COVER, L1730B/P BACK DOOR_"B" TYPE_SILVER -For Australia(L1730PSUPM), Taiwan(L1730PSNPM)
	3550TKK449F	COVER, L1730B/P BACK DOOR_"E"-CKD -For Europe, Russia, U.K
180	6850TD9007C	CABLE,D-SUB, UL20276-9C(5.8MM) DT L1800MM, CORE POS400MM BLACK(9930) L1730 DM
190	6866TDV004S	CABLE,DVI, UL20276 AWG30 DT 1800MM BLACK(9930) LS204L DM
200	6866TDU002A	CABLE,D-SUB, UL20276 DT 1870MM BLACK LQ800 DM -Only L1730PSUPM

REPLACEMENT PARTS LIST

CAUTION: BEFORE REPLACING ANY OF THESE COMPONENTS,
 READ CAREFULLY THE **SAFETY PRECAUTIONS** IN THIS MANUAL.

* NOTE : **S** SAFETY Mark **AL** ALTERNATIVE PARTS

DATE: 2004. 7. 12.			
*S	*AL	LOC. NO.	PART NO. DESCRIPTION / SPECIFICATION
MAIN BOARD			
CAPACITORS			
		C201	OCK104CK56A 0.1UF 1608 50V 10% R/TP X7R
		C202	OCK104CK56A 0.1UF 1608 50V 10% R/TP X7R
		C203	OCK104CK56A 0.1UF 1608 50V 10% R/TP X7R
		C204	OCK104CK56A 0.1UF 1608 50V 10% R/TP X7R
		C205	OCK104CK56A 0.1UF 1608 50V 10% R/TP X7R
		C206	OCK104CK56A 0.1UF 1608 50V 10% R/TP X7R
		C207	OCK104CK56A 0.1UF 1608 50V 10% R/TP X7R
		C208	OCK104CK56A 0.1UF 1608 50V 10% R/TP X7R
		C209	OCK104CK56A 0.1UF 1608 50V 10% R/TP X7R
		C210	OCK104CK56A 0.1UF 1608 50V 10% R/TP X7R
		C211	OCK104CK56A 0.1UF 1608 50V 10% R/TP X7R
		C212	OCK104CK56A 0.1UF 1608 50V 10% R/TP X7R
		C213	OCK104CK56A 0.1UF 1608 50V 10% R/TP X7R
		C214	OCK104CK56A 0.1UF 1608 50V 10% R/TP X7R
		C215	OCK104CK56A 0.1UF 1608 50V 10% R/TP X7R
		C216	OCK104CK56A 0.1UF 1608 50V 10% R/TP X7R
		C217	OCK104CK56A 0.1UF 1608 50V 10% R/TP X7R
		C218	OCK104CK56A 0.1UF 1608 50V 10% R/TP X7R
		C219	OCK104CK56A 0.1UF 1608 50V 10% R/TP X7R
		C220	OCK104CK56A 0.1UF 1608 50V 10% R/TP X7R
		C221	OCK104CK56A 0.1UF 1608 50V 10% R/TP X7R
		C222	OCK104CK56A 0.1UF 1608 50V 10% R/TP X7R
		C223	OCK104CK56A 0.1UF 1608 50V 10% R/TP X7R
		C224	OCK104CK56A 0.1UF 1608 50V 10% R/TP X7R
		C225	OCK104CK56A 0.1UF 1608 50V 10% R/TP X7R
		C226	OCK104CK56A 0.1UF 1608 50V 10% R/TP X7R
		C227	OCK104CK56A 0.1UF 1608 50V 10% R/TP X7R
		C228	OCK104CK56A 0.1UF 1608 50V 10% R/TP X7R
		C229	OCK104CK56A 0.1UF 1608 50V 10% R/TP X7R
		C230	OCK104CK56A 0.1UF 1608 50V 10% R/TP X7R
		C231	OCK103CK51A 0.01UF 1608 50V 10% R/TP B(Y5)
		C232	OCK103CK51A 0.01UF 1608 50V 10% R/TP B(Y5)
		C233	OCK103CK51A 0.01UF 1608 50V 10% R/TP B(Y5)
		C234	OCK103CK51A 0.01UF 1608 50V 10% R/TP B(Y5)
		C235	OCK103CK51A 0.01UF 1608 50V 10% R/TP B(Y5)
		C236	OCK103CK51A 0.01UF 1608 50V 10% R/TP B(Y5)
		C237	OCK104CK56A 0.1UF 1608 50V 10% R/TP X7R
		C238	OCK104CK56A 0.1UF 1608 50V 10% R/TP X7R
		C239	OCC080CK11A 8PF 1608 50V 0.5 PF R/TP NP0
		C240	OCC080CK11A 8PF 1608 50V 0.5 PF R/TP NP0
		C241	OCK104CK56A 0.1UF 1608 50V 10% R/TP X7R
		C243	OCC101CK41A 100PF 1608 50V 5% R/TP NP0
		C244	OCC101CK41A 100PF 1608 50V 5% R/TP NP0
		C245	OCK103CK51A 0.01UF 1608 50V 10% R/TP B(Y5)
		C246	OCC221CK41A 220PF 1608 50V 5% R/TP NP0
		C247	OCC220CK41A 22PF 1608 50V 5% R/TP NP0
		C248	OCK104CK56A 0.1UF 1608 50V 10% R/TP X7R
		C249	OCK104CK56A 0.1UF 1608 50V 10% R/TP X7R
		C250	OCK103CK51A 0.01UF 1608 50V 10% R/TP B(Y5)
		C251	OCK103CK51A 0.01UF 1608 50V 10% R/TP B(Y5)
		C252	OCK104CK56A 0.1UF 1608 50V 10% R/TP X7R
		C253	OCE107EF610 "100UF KMG,RD 16V 20% FL BULK"

DATE: 2004. 7. 12.			
*S	*AL	LOC. NO.	PART NO. DESCRIPTION / SPECIFICATION
		C403	OCK105CD56A 1UF 1608 10V 10% R/TP X7R
		C405	OCC102CK41A 1000PF 1608 50V 5% R/TP NP0
		C406	OCK103CK51A 0.01UF 1608 50V 10% R/TP B(Y5)
		C407	OCE107EF610 "100UF KMG,RD 16V 20% FL BULK"
		C408	OCE107EF610 "100UF KMG,RD 16V 20% FL BULK"
		C409	OCK104CK56A 0.1UF 1608 50V 10% R/TP X7R
		C410	OCC102CK41A 1000PF 1608 50V 5% R/TP NP0
		C411	OCK104CK56A 0.1UF 1608 50V 10% R/TP X7R
		C412	OCC102CK41A 1000PF 1608 50V 5% R/TP NP0
		C413	OCK104CK56A 0.1UF 1608 50V 10% R/TP X7R
		C414	OCC102CK41A 1000PF 1608 50V 5% R/TP NP0
		C415	OCK104CK56A 0.1UF 1608 50V 10% R/TP X7R
		C416	OCC102CK41A 1000PF 1608 50V 5% R/TP NP0
		C417	OCE107EF610 "100UF KMG,RD 16V 20% FL BULK"
		C418	OCE107EF610 "100UF KMG,RD 16V 20% FL BULK"
		C419	OCE107EF610 "100UF KMG,RD 16V 20% FL BULK"
		C601	OCC101CK41A 100PF 1608 50V 5% R/TP NP0
		C602	OCC101CK41A 100PF 1608 50V 5% R/TP NP0
		C603	OCC101CK41A 100PF 1608 50V 5% R/TP NP0
		C604	OCC101CK41A 100PF 1608 50V 5% R/TP NP0
		C605	OCC101CK41A 100PF 1608 50V 5% R/TP NP0
		C606	OCC101CK41A 100PF 1608 50V 5% R/TP NP0
		C610	OCK104CK56A 0.1UF 1608 50V 10% R/TP X7R
		C611	OCK104CK56A 0.1UF 1608 50V 10% R/TP X7R
		C612	OCK104CK56A 0.1UF 1608 50V 10% R/TP X7R
		C613	OCK104CK56A 0.1UF 1608 50V 10% R/TP X7R
		C614	OCK104CK56A 0.1UF 1608 50V 10% R/TP X7R
		C615	OCK104CK56A 0.1UF 1608 50V 10% R/TP X7R
		C630	OCK104CK56A 0.1UF 1608 50V 10% R/TP X7R
		C631	OCK104CK56A 0.1UF 1608 50V 10% R/TP X7R
		C632	OCK104CK56A 0.1UF 1608 50V 10% R/TP X7R
		C633	OCK104CK56A 0.1UF 1608 50V 10% R/TP X7R
		C634	OCK104CK56A 0.1UF 1608 50V 10% R/TP X7R
		C635	OCK104CK56A 0.1UF 1608 50V 10% R/TP X7R
		C636	OCK104CK56A 0.1UF 1608 50V 10% R/TP X7R
		C637	OCK104CK56A 0.1UF 1608 50V 10% R/TP X7R
		C638	OCK104CK56A 0.1UF 1608 50V 10% R/TP X7R
		C639	OCK104CK56A 0.1UF 1608 50V 10% R/TP X7R
		C640	OCK104CK56A 0.1UF 1608 50V 10% R/TP X7R
		C641	OCE107EF610 "100UF KMG,RD 16V 20% FL BULK"
		C642	OCK103CK51A 0.01UF 1608 50V 10% R/TP B(Y5)
		C643	OCK105CD56A 1UF 1608 10V 10% R/TP X7R
		C644	OCK105CD56A 1UF 1608 10V 10% R/TP X7R
		C645	OCK103CK51A 0.01UF 1608 50V 10% R/TP B(Y5)
		C646	OCK103CK51A 0.01UF 1608 50V 10% R/TP B(Y5)
		C647	OCK103CK51A 0.01UF 1608 50V 10% R/TP B(Y5)
		C648	OCK103CK51A 0.01UF 1608 50V 10% R/TP B(Y5)
DIODES			
		D601	ODS226009AA KDS226 TP KEC SOT-23 80V 300
		D602	ODS226009AA KDS226 TP KEC SOT-23 80V 300
		D603	ODS226009AA KDS226 TP KEC SOT-23 80V 300
		D604	ODS226009AA KDS226 TP KEC SOT-23 80V 300

DATE: 2004. 7. 12.				
*S	*AL	LOC. NO.	PART NO.	DESCRIPTION / SPECIFICATION
		D605	0DS226009AA	KDS226 TP KEC SOT-23 80V 300
		D606	0DS226009AA	KDS226 TP KEC SOT-23 80V 300
		D607	0DS226009AA	KDS226 TP KEC SOT-23 80V 300
		D608	0DS226009AA	KDS226 TP KEC SOT-23 80V 300
		D609	0DS226009AA	KDS226 TP KEC SOT-23 80V 300
		D610	0DS226009AA	KDS226 TP KEC SOT-23 80V 300
		D611	0DS226009AA	KDS226 TP KEC SOT-23 80V 300
		D612	0DS226009AA	KDS226 TP KEC SOT-23 80V 300
		D621	0DS301109AA	MMBD301LT1 TP MOTOROLA SOT23
		D622	0DS301109AA	MMBD301LT1 TP MOTOROLA SOT23
		D623	0DS301109AA	MMBD301LT1 TP MOTOROLA SOT23
		ZD601	0DZ560009GB	BZT52C5V6S DIODES R/TP SOD323
		ZD602	0DZ560009GB	BZT52C5V6S DIODES R/TP SOD323
		ZD603	0DZ560009GB	BZT52C5V6S DIODES R/TP SOD323
		ZD604	0DZ560009GB	BZT52C5V6S DIODES R/TP SOD323
		ZD605	0DZ560009GB	BZT52C5V6S DIODES R/TP SOD323
		ZD606	0DZ560009GB	BZT52C5V6S DIODES R/TP SOD323
		ZD607	0DZ560009GB	BZT52C5V6S DIODES R/TP SOD323
		ZD608	0DZ560009GB	BZT52C5V6S DIODES R/TP SOD323
		ZD609	0DZ560009GB	BZT52C5V6S DIODES R/TP SOD323
ICs				
		U201	0IPRPGN014B	"FE2010,GM5221-FLATRON F ENGIN"
		U202	0IMMRAL039A	"AT49F002AN-55JI ATMEL 32P,PLC"
		U202	0IZZTSZ459A	ATMEL 32PIN ST OPT L1730PM
		U203	0IKE704200H	KIA7042AP TO-92 TP 4.2 VOLT.
		U204	0ISG240860B	M24C08W6 SGS-THOMSON 8SOP R/T
		U401	0IPMGKE011A	KIA78D33F KEC DPAK R/TP 3.3V
		U402	0IPMGSG019A	LD1117S18TR STM SOT223 R/TP 1
		U403	0TFV180023A	VISHAY SI3865DV R/TP TSOP-6 8
		U601	0IMMRSG036A	"M24C02-WMN6T SGS-THOMSON 8P,S"
		U602	0IMMRSG036A	"M24C02-WMN6T SGS-THOMSON 8P,S"
		U604	0DRCE00018A	PACDN004 CAMD R/TP SOT143 5V
		U605	0DRCE00018A	PACDN004 CAMD R/TP SOT143 5V
		U606	0DRCE00018A	PACDN004 CAMD R/TP SOT143 5V
		U607	0DRCE00018A	PACDN004 CAMD R/TP SOT143 5V
TRANSISTOR				
		Q201	0TR390409AE	FAIRCHILD KST3904(LGEMTF) TP
		Q202	0TR390409AE	FAIRCHILD KST3904(LGEMTF) TP
		Q601	0TR390409AE	FAIRCHILD KST3904(LGEMTF) TP
		Q602	0TR390409AE	FAIRCHILD KST3904(LGEMTF) TP
		Q603	0TR390609FA	KST3906-MTF TP SAMSUNG SOT23
		Q604	0TR390609FA	KST3906-MTF TP SAMSUNG SOT23
RESISTORS				
		R201	0RJ1000D677	100 OHM 1/10 W 5% 1608 R/TP
		R202	0RJ0822D677	82 OHM 1/10 W 5% 1608 R/TP
		R203	0RJ4701D677	4.7K OHM 1/10 W 5% 1608 R/TP
		R204	0RJ4701D677	4.7K OHM 1/10 W 5% 1608 R/TP
		R205	0RJ0000D677	0 OHM 1/10 W 5% 1608 R/TP
		R208	0RJ1000D677	100 OHM 1/10 W 5% 1608 R/TP
		R212	0RJ0822D677	82 OHM 1/10 W 5% 1608 R/TP
		R214	0RJ3301D677	3.3K OHM 1/10 W 5% 1608 R/TP
		R215	0RJ4702D677	47000 OHM 1/10 W 5% 1608 R/TP
		R216	0RJ1000D677	100 OHM 1/10 W 5% 1608 R/TP
		R217	0RJ1000D677	100 OHM 1/10 W 5% 1608 R/TP
		R218	0RJ1002D677	10K OHM 1/10 W 5% 1608 R/TP
		R220	0RJ0822D677	82 OHM 1/10 W 5% 1608 R/TP

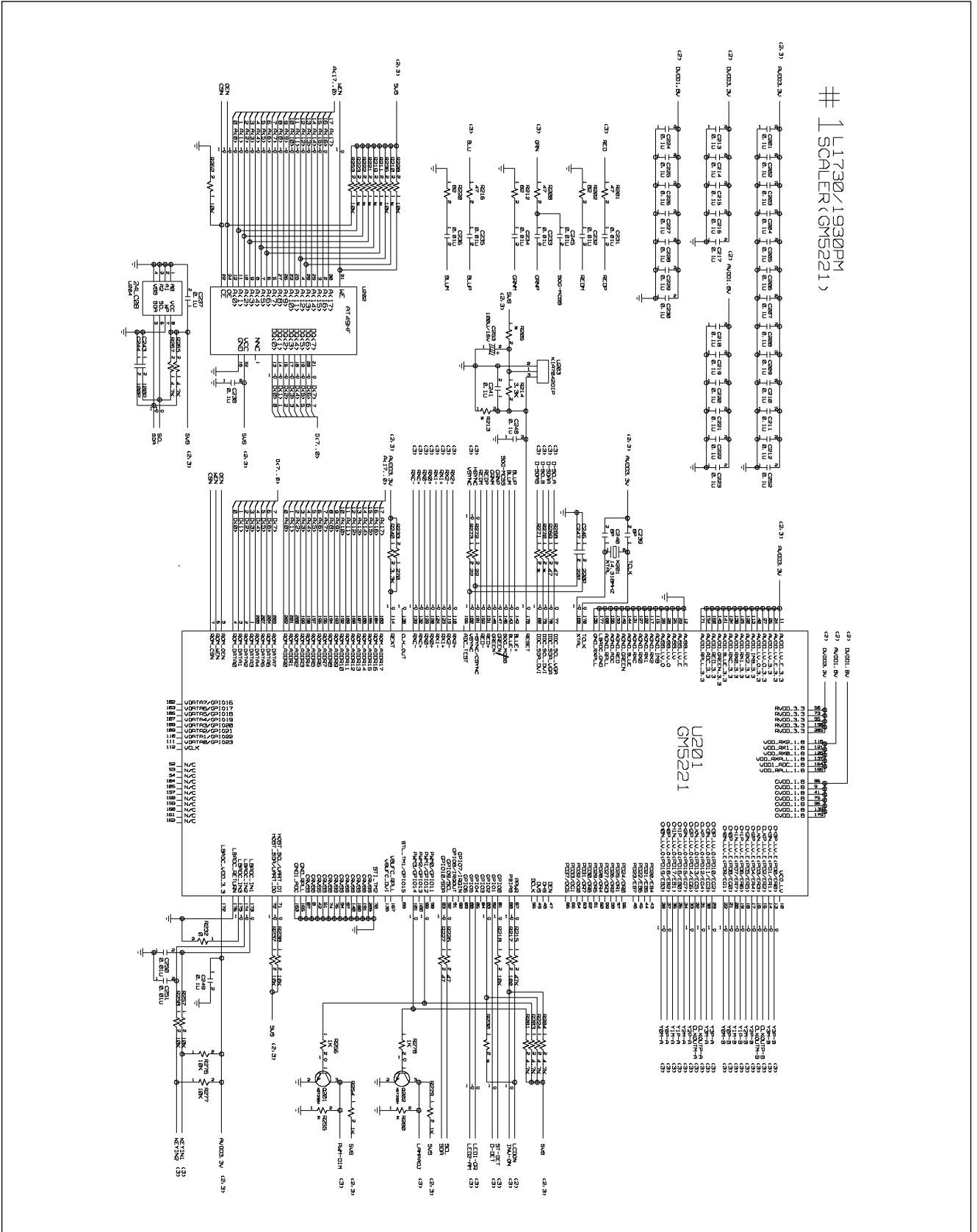
DATE: 2004. 7. 12.				
*S	*AL	LOC. NO.	PART NO.	DESCRIPTION / SPECIFICATION
		R224	0RJ4701D677	4.7K OHM 1/10 W 5% 1608 R/TP
		R226	0RJ0472D677	47 OHM 1/10 W 5% 1608 R/TP
		R227	0RJ0472D677	47 OHM 1/10 W 5% 1608 R/TP
		R228	0RJ1002D677	10K OHM 1/10 W 5% 1608 R/TP
		R232	0RJ0000D677	0 OHM 1/10 W 5% 1608 R/TP
		R233	0RJ2700D677	270 OHM 1/10 W 5% 1608 R/TP
		R236	0RJ1002D677	10K OHM 1/10 W 5% 1608 R/TP
		R237	0RJ1002D677	10K OHM 1/10 W 5% 1608 R/TP
		R238	0RJ1002D677	10K OHM 1/10 W 5% 1608 R/TP
		R240	0RJ3301D677	3.3K OHM 1/10 W 5% 1608 R/TP
		R253	0RJ1002D677	10K OHM 1/10 W 5% 1608 R/TP
		R254	0RJ1001D677	1K OHM 1/10 W 5% 1608 R/TP
		R256	0RJ1001D677	1K OHM 1/10 W 5% 1608 R/TP
		R257	0RJ1002D677	10K OHM 1/10 W 5% 1608 R/TP
		R258	0RJ1002D677	10K OHM 1/10 W 5% 1608 R/TP
		R262	0RJ1002D677	10K OHM 1/10 W 5% 1608 R/TP
		R265	0RJ4701D677	4.7K OHM 1/10 W 5% 1608 R/TP
		R267	0RJ4701D677	4.7K OHM 1/10 W 5% 1608 R/TP
		R268	0RJ0472D677	47 OHM 1/10 W 5% 1608 R/TP
		R269	0RJ0472D677	47 OHM 1/10 W 5% 1608 R/TP
		R272	0RJ0222D677	22 OHM 1/10 W 5% 1608 R/TP
		R273	0RJ0222D677	22 OHM 1/10 W 5% 1608 R/TP
		R276	0RJ1002D677	10K OHM 1/10 W 5% 1608 R/TP
		R277	0RJ1002D677	10K OHM 1/10 W 5% 1608 R/TP
		R278	0RJ1001D677	1K OHM 1/10 W 5% 1608 R/TP
		R279	0RJ1001D677	1K OHM 1/10 W 5% 1608 R/TP
		R281	0RJ4701D677	4.7K OHM 1/10 W 5% 1608 R/TP
		R413	0RJ2202D677	22K OHM 1/10 W 5% 1608 R/TP
		R414	0RJ5600D677	560 OHM 1/10 W 5% 1608 R/TP
		R419	0RJ0000D677	0 OHM 1/10 W 5% 1608 R/TP
		R420	0RJ0000D677	0 OHM 1/10 W 5% 1608 R/TP
		R421	0RJ0000D677	0 OHM 1/10 W 5% 1608 R/TP
		R422	0RJ0000D677	0 OHM 1/10 W 5% 1608 R/TP
		R604	0RJ0752D677	75 OHM 1/10 W 5% 1608 R/TP
		R605	0RJ0752D677	75 OHM 1/10 W 5% 1608 R/TP
		R606	0RJ0752D677	75 OHM 1/10 W 5% 1608 R/TP
		R607	0RJ4701D677	4.7K OHM 1/10 W 5% 1608 R/TP
		R616	0RJ0332D677	33 OHM 1/10 W 5% 1608 R/TP
		R617	0RJ0332D677	33 OHM 1/10 W 5% 1608 R/TP
		R618	0RJ1002D677	10K OHM 1/10 W 5% 1608 R/TP
		R619	0RJ4701D677	4.7K OHM 1/10 W 5% 1608 R/TP
		R620	0RJ4700D677	470 OHM 1/10 W 5% 1608 R/TP
		R625	0RJ0332D677	33 OHM 1/10 W 5% 1608 R/TP
		R626	0RJ0332D677	33 OHM 1/10 W 5% 1608 R/TP
		R627	0RJ4701D677	4.7K OHM 1/10 W 5% 1608 R/TP
		R628	0RJ4701D677	4.7K OHM 1/10 W 5% 1608 R/TP
		R629	0RJ4701D677	4.7K OHM 1/10 W 5% 1608 R/TP
		R630	0RJ4701D677	4.7K OHM 1/10 W 5% 1608 R/TP
		R631	0RJ1001D677	1K OHM 1/10 W 5% 1608 R/TP
		R632	0RJ1001D677	1K OHM 1/10 W 5% 1608 R/TP
		R642	0RJ1002D677	10K OHM 1/10 W 5% 1608 R/TP
		R643	0RJ1002D677	10K OHM 1/10 W 5% 1608 R/TP
		R650	0RJ1002D677	10K OHM 1/10 W 5% 1608 R/TP
		R651	0RJ1002D677	10K OHM 1/10 W 5% 1608 R/TP
		R652	0RJ1002D677	10K OHM 1/10 W 5% 1608 R/TP
		R654	0RJ0102D677	10 OHM 1/10 W 5% 1608 R/TP
		R655	0RJ0102D677	10 OHM 1/10 W 5% 1608 R/TP
		R656	0RJ4700D677	470 OHM 1/10 W 5% 1608 R/TP
		R657	0RJ4700D677	470 OHM 1/10 W 5% 1608 R/TP
		R660	0RJ4701D677	4.7K OHM 1/10 W 5% 1608 R/TP
		R661	0RJ4701D677	4.7K OHM 1/10 W 5% 1608 R/TP
		R662	0RJ4701D677	4.7K OHM 1/10 W 5% 1608 R/TP

DATE: 2004. 7. 12.				
*S	*AL	LOC. NO.	PART NO.	DESCRIPTION / SPECIFICATION
		R663	0RJ4701D677	4.7K OHM 1/10 W 5% 1608 R/TP
		R666	0RJ1001D677	1K OHM 1/10 W 5% 1608 R/TP
		R667	0RJ1001D677	1K OHM 1/10 W 5% 1608 R/TP
OTHERs				
		X201	6212AA2004F	HC-49U TXC 14.318 MHZ +/- 30
CONTROL BOARD				
		C1	0CK104CK56A	0.1UF 1608 50V 10% R/TP X7R
		C2	0CK104CK56A	0.1UF 1608 50V 10% R/TP X7R
		LED1	0DLLT0340AA	LITEON LTL-14CDJNHBP1 BK GREE
		Q1	0TR390409AE	FAIRCHILD KST3904(LGEMTF) TP
		Q2	0TR390409AE	FAIRCHILD KST3904(LGEMTF) TP
		R1	0RJ4701D677	4.7K OHM 1/10 W 5% 1608 R/TP
		R2	0RJ4701D677	4.7K OHM 1/10 W 5% 1608 R/TP
		R3	0RJ2001D677	2K OHM 1/10 W 5% 1608 R/TP
		R4	0RJ2001D677	2K OHM 1/10 W 5% 1608 R/TP
		R5	0RJ4701D677	4.7K OHM 1/10 W 5% 1608 R/TP
		R7	0RJ4700D677	470 OHM 1/10 W 5% 1608 R/TP
		R8	0RJ4700D677	470 OHM 1/10 W 5% 1608 R/TP
		SW2	140-058E	SKHV10910B LGEC NON 12V 20A H
		SW3	140-058E	SKHV10910B LGEC NON 12V 20A H
		SW6	140-058E	SKHV10910B LGEC NON 12V 20A H
		SW7	140-058E	SKHV10910B LGEC NON 12V 20A H
		SW8	140-058E	SKHV10910B LGEC NON 12V 20A H
USB BOARD(Only L1730PSUPM)				
		C1	0CE107EF638	100UF KMG 16V M FM5 TP 5
		C10	0CC470CK41A	47PF 1608 50V 5% R/TP NP0
		C11	0CC470CK41A	47PF 1608 50V 5% R/TP NP0
		C12	0CC470CK41A	47PF 1608 50V 5% R/TP NP0
		C13	0CC470CK41A	47PF 1608 50V 5% R/TP NP0
		C14	0CE107EF638	100UF KMG 16V M FM5 TP 5
		C15	0CE107EF638	100UF KMG 16V M FM5 TP 5
		C16	0CC470CK41A	47PF 1608 50V 5% R/TP NP0
		C17	0CC470CK41A	47PF 1608 50V 5% R/TP NP0
		C2	0CK103CK51A	0.01UF 1608 50V 10% R/TP B(Y5
		C3	0CH8105K611	1UF 50V M 85STD(CYL) R/TP
		C4	0CH8105K611	1UF 50V M 85STD(CYL) R/TP
		C5	0CK103CK51A	0.01UF 1608 50V 10% R/TP B(Y5
		C6	0CC330CK41A	33PF 1608 50V 5% R/TP NP0
		C7	0CC330CK41A	33PF 1608 50V 5% R/TP NP0
		C8	0CK104CK56A	0.1UF 1608 50V 10% R/TP X7R
		C9	0CK104CK56A	0.1UF 1608 50V 10% R/TP X7R
		IC1	0IPH112200C	"ISP1122ABD 32P,LQFP R/TP USB"
		IC5	0ITI204200B	TPS2042ADR TEXAS INSTRUMENT 8
		JK1	6630SK00604	"UAR27-4K2300 ACON 4P 2.0MM ""A"
		JK2	6630SK00604	"UAR27-4K2300 ACON 4P 2.0MM ""A"
		JK3	6630SK00804	"UAR24-4K2300 ACON 4P 2.0MM ""B"
		L2	125-155H	BFS3510A0FG SAMWHA 3.5*10MM A
		L3	6210TCE001K	HB-1H2012-260JT CERATEC 2012M
		L4	6210TCE001K	HB-1H2012-260JT CERATEC 2012M
		L5	6210TCE001K	HB-1H2012-260JT CERATEC 2012M
		L6	6210TCE001K	HB-1H2012-260JT CERATEC 2012M
		L8	6210TCE001K	HB-1H2012-260JT CERATEC 2012M
		L9	6210TCE001K	HB-1H2012-260JT CERATEC 2012M
		R1	0RJ1004D677	1000000 OHM 1/10 W 5% 1608 R/
		R10	0RJ1003D677	100K OHM 1/10 W 5% 1608 R/TP
		R11	0RJ1003D677	100K OHM 1/10 W 5% 1608 R/TP

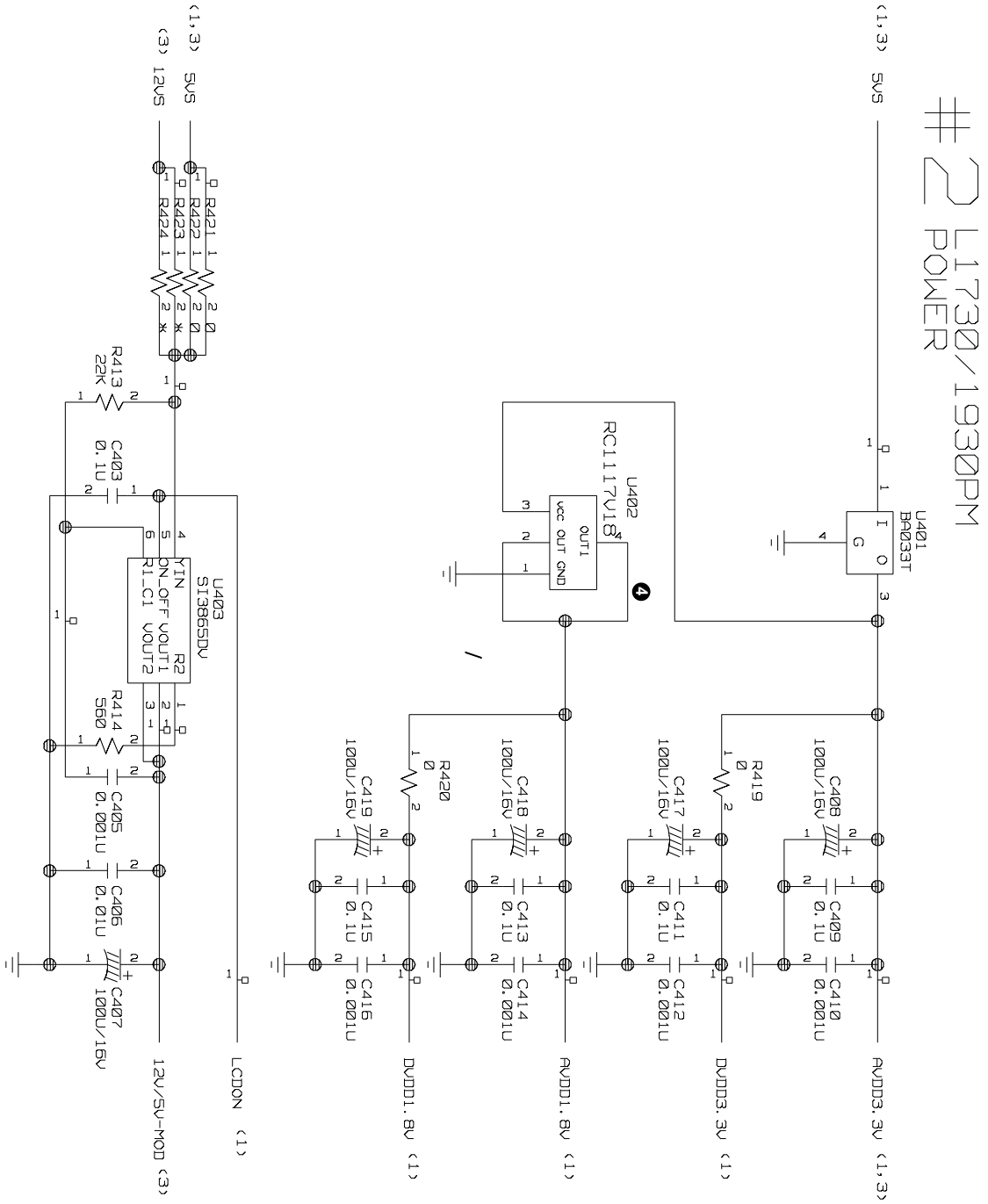
DATE: 2004. 7. 12.				
*S	*AL	LOC. NO.	PART NO.	DESCRIPTION / SPECIFICATION
		R12	0RJ1004D677	1000000 OHM 1/10 W 5% 1608 R/
		R13	0RJ1502D677	15K OHM 1/10 W 5% 1608 R/TP
		R14	0RJ1502D677	15K OHM 1/10 W 5% 1608 R/TP
		R15	0RJ4701D677	4.7K OHM 1/10 W 5% 1608 R/TP
		R16	0RJ4701D677	4.7K OHM 1/10 W 5% 1608 R/TP
		R17	0RJ0222D677	22 OHM 1/10 W 5% 1608 R/TP
		R18	0RJ0222D677	22 OHM 1/10 W 5% 1608 R/TP
		R19	0RJ0222D677	22 OHM 1/10 W 5% 1608 R/TP
		R2	0RJ3301D677	3.3K OHM 1/10 W 5% 1608 R/TP
		R20	0RJ0222D677	22 OHM 1/10 W 5% 1608 R/TP
		R21	0RJ1502D677	15K OHM 1/10 W 5% 1608 R/TP
		R22	0RJ1502D677	15K OHM 1/10 W 5% 1608 R/TP
		R23	0RJ1502D677	15K OHM 1/10 W 5% 1608 R/TP
		R24	0RJ1502D677	15K OHM 1/10 W 5% 1608 R/TP
		R25	0RJ0222D677	22 OHM 1/10 W 5% 1608 R/TP
		R26	0RJ0222D677	22 OHM 1/10 W 5% 1608 R/TP
		R27	0RJ0000D677	0 OHM 1/10 W 5% 1608 R/TP
		R28	0RJ0000D677	0 OHM 1/10 W 5% 1608 R/TP
		R3	0RJ1002D677	10K OHM 1/10 W 5% 1608 R/TP
		R4	0RJ1501D677	1.5K OHM 1/10 W 5% 1608 R/TP
		R5	0RJ1002D677	10K OHM 1/10 W 5% 1608 R/TP
		R6	0RJ1002D677	10K OHM 1/10 W 5% 1608 R/TP
		R7	0RJ1004D677	1000000 OHM 1/10 W 5% 1608 R/
		R8	0RJ1004D677	1000000 OHM 1/10 W 5% 1608 R/
		R9	0RJ1003D677	100K OHM 1/10 W 5% 1608 R/TP
		X1	6202TTB002B	ATS-49/U SUNNY RADIAL 6MHZ 30
		ZD1	0DZ510009EE	UDZ S 5.1B TP ROHM-K SOD323 2
		ZD2	0DZ510009EE	UDZ S 5.1B TP ROHM-K SOD323 2
		ZD3	0DZ510009EE	UDZ S 5.1B TP ROHM-K SOD323 2
		ZD4	0DZ510009EE	UDZ S 5.1B TP ROHM-K SOD323 2
		ZD5	0DZ510009EE	UDZ S 5.1B TP ROHM-K SOD323 2
		ZD6	0DZ560009DA	UDZ S 5.6B TP ROHM-K SOD323 2
		ZD7	0DZ560009DA	UDZ S 5.6B TP ROHM-K SOD323 2
		ZD8	0DZ510009EE	UDZ S 5.1B TP ROHM-K SOD323 2
		ZD9	0DZ510009EE	UDZ S 5.1B TP ROHM-K SOD323 2

SCHEMATIC DIAGRAM

1. SCALER

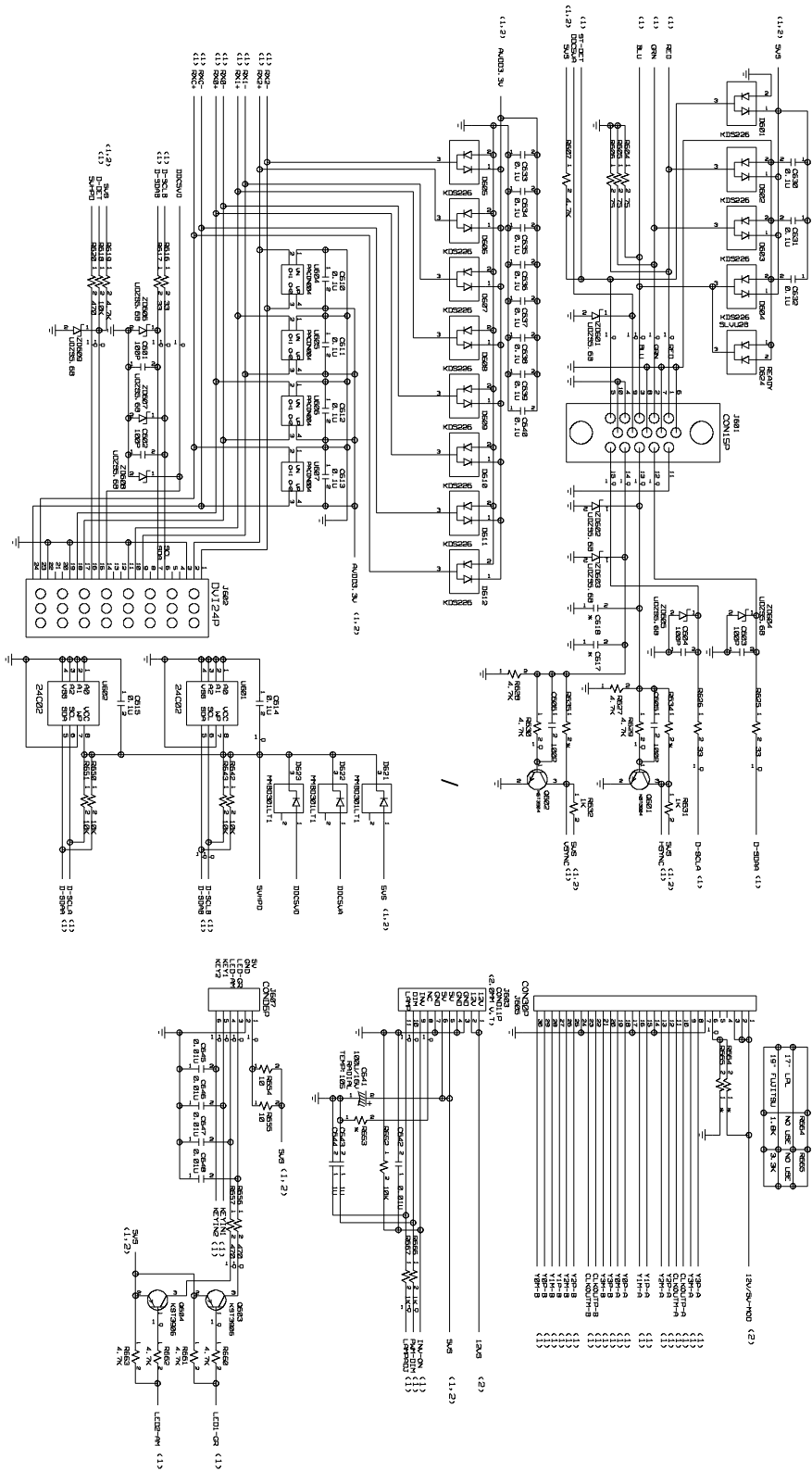


2. POWER



3. CONNECTOR

3 L1730/1930PM CONNECTOR



Blank Page1

Blank Page2



P/NO : 3828TSL085C

Aug. 2004
Printed in Korea